

For Research Use Only

UBE4B Polyclonal antibody

Catalog Number: 18148-1-AP

Featured Product

7 Publications



Basic Information

Catalog Number:

18148-1-AP

Size:

400 µg/ml

Source:

Rabbit

Isotype:

IgG

Immunogen Catalog Number:

AG12836

GenBank Accession Number:

BC093696

GeneID (NCBI):

10277

UNIPROT ID:

O95155

Full Name:

ubiquitination factor E4B (UFD2 homolog, yeast)

Calculated MW:

1173 aa, 133 kDa

Observed MW:

146 kDa

Purification Method:

Antigen affinity purification

Recommended Dilutions:

WB 1:2000-1:10000

IP 0.5-4.0 µg for 1.0-3.0 mg of total protein lysate

IHC 1:20-1:200

IF/ICC 1:10-1:100

Applications

Tested Applications:

IF/ICC, IHC, IP, WB, ELISA

Cited Applications:

WB, IHC

Species Specificity:

human, mouse, rat

Cited Species:

human

Note-IHC: suggested antigen retrieval with TE buffer pH 9.0; (*) Alternatively, antigen retrieval may be performed with citrate buffer pH 6.0

Positive Controls:

WB: HEK-293T cells, mouse testis tissue, HeLa cells, K-562 cells, Raji cells

IP: HeLa cells,

IHC: human heart tissue,

IF/ICC: HeLa cells,

Background Information

Notable Publications

Author	Pubmed ID	Journal	Application
Xianyan Hu	32645369	Mol Cell	WB
Hongyu Zhang	24995952	Proteomics	WB
Xu-Qiong Huang	32021266	Onco Targets Ther	WB,IHC

Storage

Storage:

Store at -20°C. Stable for one year after shipment.

Storage Buffer:

PBS with 0.02% sodium azide and 50% glycerol pH 7.3.

Aliquoting is unnecessary for -20°C storage

For technical support and original validation data for this product please contact:

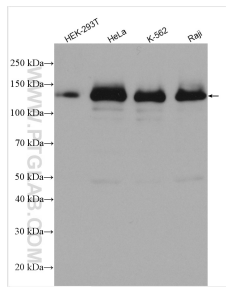
T: 4006900926

E: Proteintech-CN@ptglab.com

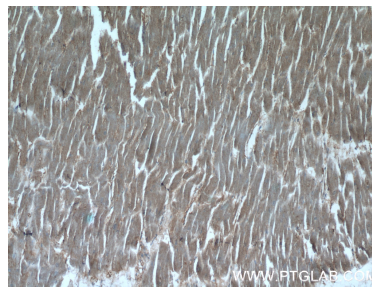
W: ptgcn.com

This product is exclusively available under Proteintech Group brand and is not available to purchase from any other manufacturer.

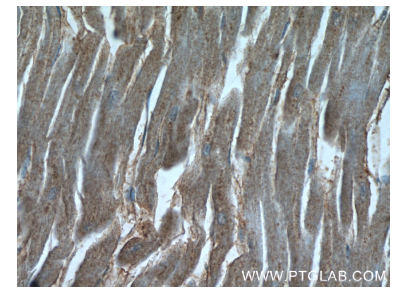
Selected Validation Data



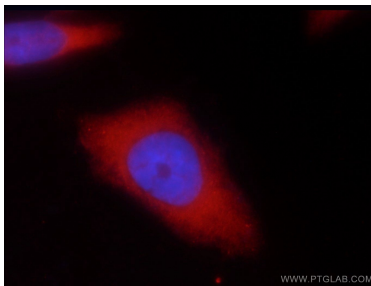
Various lysates were subjected to SDS PAGE followed by western blot with 18148-1-AP (UBE4B antibody) at dilution of 1:5000 incubated at room temperature for 1.5 hours.



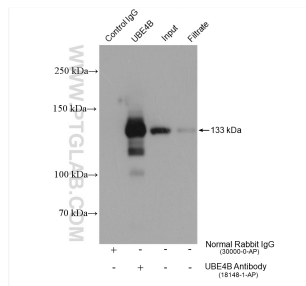
Immunohistochemical analysis of paraffin-embedded human heart tissue slide using 18148-1-AP (UBE4B Antibody) at dilution of 1:50 (under 10x lens).



Immunohistochemical analysis of paraffin-embedded human heart tissue slide using 18148-1-AP (UBE4B Antibody) at dilution of 1:50 (under 40x lens).



Immunofluorescent analysis of HeLa cells using 18148-1-AP (UBE4B antibody) at dilution of 1:25 and Rhodamine-Goat anti-Rabbit IgG.



IP result of anti-UBE4B (IP:18148-1-AP, 4ug; Detection:18148-1-AP 1:1000) with HeLa cells lysate 2320 ug.