

For Research Use Only

# HEPACAM Polyclonal antibody

Catalog Number: 18177-1-AP **22 Publications**



## Basic Information

<b>Catalog Number:</b> 18177-1-AP	<b>GenBank Accession Number:</b> BC104831	<b>Purification Method:</b> Antigen affinity purification
<b>Size:</b> 350 ug/ml	<b>GeneID (NCBI):</b> 220296	<b>Recommended Dilutions:</b> WB 1:500-1:1000
<b>Source:</b> Rabbit	<b>UNIPROT ID:</b> Q14CZ8	IP 0.5-4.0 ug for 1.0-3.0 mg of total protein lysate
<b>Isotype:</b> IgG	<b>Full Name:</b> hepatocyte cell adhesion molecule	IHC 1:20-1:200
<b>Immunogen Catalog Number:</b> AG12870	<b>Calculated MW:</b> 416 aa, 46 kDa	IF/ICC 1:10-1:100
	<b>Observed MW:</b> 46-72 kDa	

## Applications

<b>Tested Applications:</b> WB, IHC, IF/ICC, IP, ELISA	<b>Positive Controls:</b> WB : mouse brain tissue, HepG2 cells, MCF-7 cells, mouse liver tissue, rat brain tissue, SH-SY5Y cells
<b>Cited Applications:</b> WB, IHC, IF, IP	IP : rat brain tissue,
<b>Species Specificity:</b> human, mouse, rat	IHC : human liver tissue, rat brain tissue
<b>Cited Species:</b> human, mouse, rat	IF/ICC : MCF-7 cells,
<b>Note-IHC: suggested antigen retrieval with TE buffer pH 9.0; (*) Alternatively, antigen retrieval may be performed with citrate buffer pH 6.0</b>	

## Background Information

HepaCAM (hepatocyte cell adhesion molecule), also known as GlialCAM, is a single-pass type I membrane glycoprotein of 416 amino acids. It displays a typical structure of immunoglobulin (Ig)-like adhesion molecules including two extracellular Ig-like domains, a transmembrane segment, and a cytoplasmic tail. It has been shown that hepaCAM forms a cis-homodimer on the cell surface, and modulates cell-matrix interaction. It is predominantly expressed in the CNS glial cells. Defects in HEPACAM gene are the cause of megalencephalic leukoencephalopathy with subcortical cysts type 2A (MLC2A). HEPACAM has also been suggested as a tumor suppressor gene.

## Notable Publications

Author	Pubmed ID	Journal	Application
Ting Li	33024272	Br J Cancer	IHC
Jia Tao	24324362	Int J Med Sci	WB,IF
Long Zhang	23652371	Mol Med Rep	WB

## Storage

**Storage:**  
Store at -20°C. Stable for one year after shipment.  
**Storage Buffer:**  
PBS with 0.02% sodium azide and 50% glycerol pH 7.3.  
Aliquoting is unnecessary for -20°C storage

For technical support and original validation data for this product please contact:

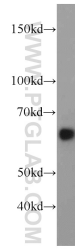
T: 4006900926

E: Proteintech-CN@ptglab.com

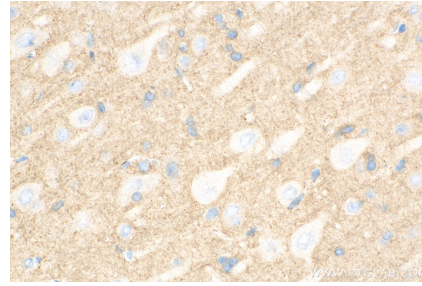
W: ptgcn.com

**This product is exclusively available under Proteintech Group brand and is not available to purchase from any other manufacturer.**

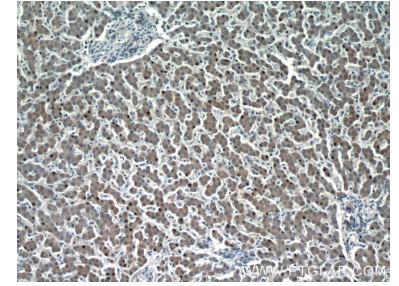
## Selected Validation Data



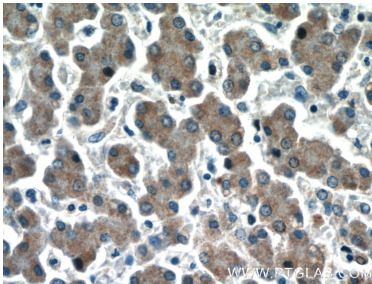
mouse brain tissue were subjected to SDS PAGE followed by western blot with 18177-1-AP (HEPACAM antibody) at dilution of 1:500 incubated at room temperature for 1.5 hours.



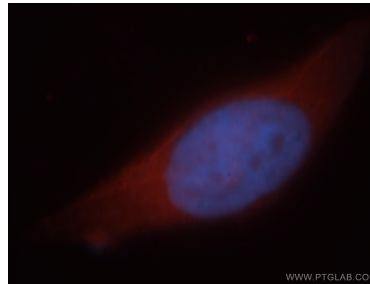
Immunohistochemical analysis of paraffin-embedded rat brain tissue slide using 18177-1-AP (HEPACAM antibody) at dilution of 1:200 (under 40x lens). Heat mediated antigen retrieval with Tris-EDTA buffer (pH 9.0).



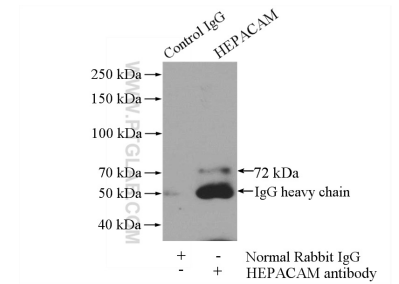
Immunohistochemical analysis of paraffin-embedded human liver tissue slide using 18177-1-AP (HEPACAM Antibody) at dilution of 1:50 (under 10x lens).



Immunohistochemical analysis of paraffin-embedded human liver tissue slide using 18177-1-AP (HEPACAM Antibody) at dilution of 1:50 (under 40x lens).



Immunofluorescent analysis of MCF-7 cells, using HEPACAM antibody 18177-1-AP at 1:25 dilution and Rhodamine-labeled goat anti-rabbit IgG (red). Blue pseudocolor = DAPI (fluorescent DNA dye).



IP result of anti-HEPACAM (IP:18177-1-AP, 4ug; Detection:18177-1-AP 1:500) with rat brain tissue lysate 4000ug.