

For Research Use Only

RBM24 Polyclonal antibody

Catalog Number: 18178-1-AP

Featured Product

11 Publications



Basic Information

Catalog Number: 18178-1-AP	GenBank Accession Number: BC104808	Purification Method: Antigen affinity purification
Size: 700 ug/ml	GeneID (NCBI): 221662	Recommended Dilutions: WB 1:500-1:1000 IHC 1:20-1:200 IF-P 1:50-1:500
Source: Rabbit	UNIPROT ID: Q9BX46	
Isotype: IgG	Full Name: RNA binding motif protein 24	
Immunogen Catalog Number: AG12871	Calculated MW: 191 aa, 20 kDa	
	Observed MW: 18-25 kDa	

Applications

Tested Applications: WB, IHC, IF-P, ELISA	Positive Controls: WB : mouse heart tissue, HeLa cells IHC : human skeletal muscle tissue, IF-P : mouse skeletal muscle tissue,
Cited Applications: WB, IHC, IF, RIP	
Species Specificity: human, mouse, rat	
Cited Species: human, mouse, chicken	
Note-IHC: suggested antigen retrieval with TE buffer pH 9.0; (*) Alternatively, antigen retrieval may be performed with citrate buffer pH 6.0	

Background Information

RNA-binding proteins have a pivotal role in post-transcriptionally regulating gene expression. During early development, they exhibit temporally and spatially regulated expression patterns and affect the proteome of a single cell by controlling alternative splicing, transport, localization, and stability of their target RNAs [PMID:22510371]. Their expression is tissue-specific, and their crucial influence on the protein set-up especially in muscle cells has become recognized recently [PMID:21982546]. RBM24 is one RNA-binding protein and plays a fundamental role in regulating cardiac gene expression, sarcomeric assembly, and cardiac contractility. It may thus represent a novel pathway to cardiomyopathy [PMID:20338237].

Notable Publications

Author	Pubmed ID	Journal	Application
Raphaëlle Grifone	25217815	Mech Dev	IF
Suhong Sun	34477109	Elife	IF
Shulei Gong	36352154	J Mol Med (Berl)	IHC,RIP

Storage

Storage:
Store at -20°C. Stable for one year after shipment.
Storage Buffer:
PBS with 0.02% sodium azide and 50% glycerol pH 7.3.
Aliquoting is unnecessary for -20°C storage

For technical support and original validation data for this product please contact:

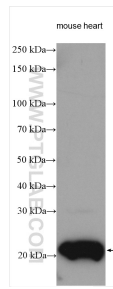
T: 4006900926

E: Proteintech-CN@ptglab.com

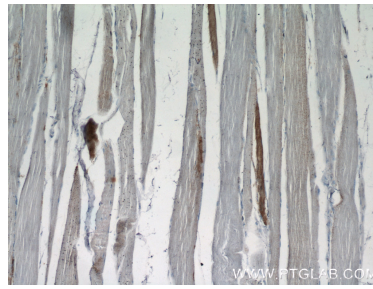
W: ptgcn.com

This product is exclusively available under Proteintech Group brand and is not available to purchase from any other manufacturer.

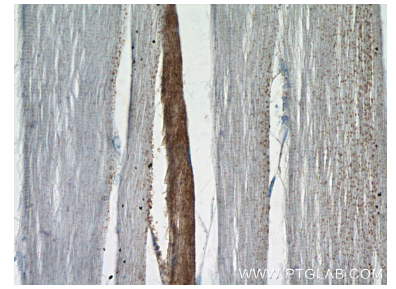
Selected Validation Data



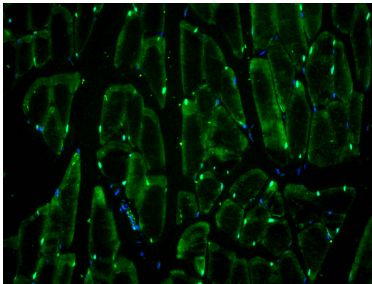
mouse heart tissue lysates were subjected to SDS PAGE followed by western blot with 18178-1-AP (RBM24 antibody) at dilution of 1:800 incubated at room temperature for 1.5 hours.



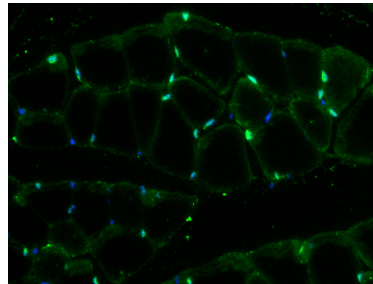
Immunohistochemical analysis of paraffin-embedded human skeletal muscle tissue slide using 18178-1-AP (RBM24 Antibody) at dilution of 1:50 (under 10x lens).



Immunohistochemical analysis of paraffin-embedded human skeletal muscle tissue slide using 18178-1-AP (RBM24 Antibody) at dilution of 1:50 (under 40x lens).



Immunofluorescent analysis of (4% PFA) fixed mouse skeletal muscle tissue using RBM24 antibody (18178-1-AP) at dilution of 1:200 and CoraLite®488-Conjugated AffiniPure Goat Anti-Rabbit IgG(H+L).



Immunofluorescent analysis of (4% PFA) fixed mouse skeletal muscle tissue using RBM24 antibody (18178-1-AP) at dilution of 1:200 and CoraLite®488-Conjugated AffiniPure Goat Anti-Rabbit IgG(H+L).