

For Research Use Only

PBX1 Polyclonal antibody

Catalog Number: 18204-1-AP **11 Publications**



Basic Information

Catalog Number: 18204-1-AP	GenBank Accession Number: BC101578	Purification Method: Antigen affinity purification
Size: 600 µg/ml	GeneID (NCBI): 5087	Recommended Dilutions: WB 1:500-1:1000 IP 0.5-4.0 µg for 1.0-3.0 mg of total protein lysate IF 1:20-1:200
Source: Rabbit	UNIPROT ID: P40424	
Isotype: IgG	Full Name: pre-B-cell leukemia homeobox 1	
Immunogen Catalog Number: AG12817	Calculated MW: 430 aa, 47 kDa	
	Observed MW: 52 kDa	

Applications

Tested Applications: IF/ICC, IP, WB, ELISA	Positive Controls: WB : A2780 cells, HeLa cells IP : A2780 cells, IF : HeLa cells,
Cited Applications: WB, IF, IHC, CoIP	
Species Specificity: human, mouse, rat	
Cited Species: human, rat, mouse	

Background Information

PBX1, also named as Pre-B-cell leukemia transcription factor 1, is a 430 amino acid protein, which belongs to the TALE/PBX homeobox family. PBX1 is expressed in all tissues except in cells of the B and T lineage. PBX1 acts as a transcriptional activator of PF4 in complex with MEIS1. PBX1 may have a role in steroidogenesis and, subsequently, sexual development and differentiation. Isoform PBX1b as part of a PDX1:PBX1b:MEIS2b complex in pancreatic acinar cells is involved in the transcriptional activation of the ELA1 enhancer. PBX1 exists two isoforms (PBX1a and PBX1b) and molecular weight of PBX1 is 47 kDa and 38 kDa.

Notable Publications

Author	Pubmed ID	Journal	Application
Xin Yang	36297316	Pharmaceuticals (Basel)	WB
Qiao Song	36243980	Nucleic Acids Res	WB, CoIP
Wang Chen	36430539	Int J Mol Sci	WB

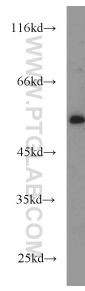
Storage

Storage:
Store at -20°C. Stable for one year after shipment.
Storage Buffer:
PBS with 0.02% sodium azide and 50% glycerol pH 7.3.
Aliquoting is unnecessary for -20°C storage

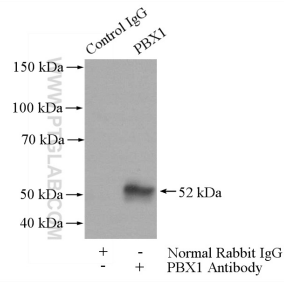
For technical support and original validation data for this product please contact:
T: 4006900926 E: Proteintech-CN@ptglab.com W: ptgcn.com

This product is exclusively available under Proteintech Group brand and is not available to purchase from any other manufacturer.

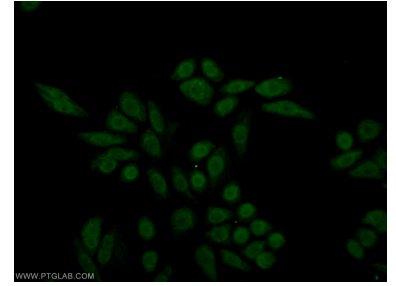
Selected Validation Data



A2780 cells were subjected to SDS PAGE followed by western blot with 18204-1-AP (PBX1 antibody) at dilution of 1:500 incubated at room temperature for 1.5 hours.



IP result of anti-PBX1 (IP:18204-1-AP, 4 μ g; Detection:18204-1-AP 1:500) with A2780 cells lysate 1000 μ g.



Immunofluorescent analysis of HeLa cells using 18204-1-AP (PBX1 antibody) at dilution of 1:50 and Alexa Fluor 488-conjugated AffiniPure Goat Anti-Rabbit IgG(H+L).