

For Research Use Only

# RPS8 Polyclonal antibody

Catalog Number: 18228-1-AP **6 Publications**



## Basic Information

<b>Catalog Number:</b> 18228-1-AP	<b>GenBank Accession Number:</b> BC070875	<b>Purification Method:</b> Antigen affinity purification
<b>Size:</b> 133 µg/ml	<b>GeneID (NCBI):</b> 6202	<b>Recommended Dilutions:</b> WB 1:500-1:2000 IF/ICC 1:20-1:200
<b>Source:</b> Rabbit	<b>UNIPROT ID:</b> P62241	
<b>Isotype:</b> IgG	<b>Full Name:</b> ribosomal protein S8	
<b>Immunogen Catalog Number:</b> AG12313	<b>Calculated MW:</b> 208 aa, 24 kDa	
	<b>Observed MW:</b> 25-28 kDa	

## Applications

<b>Tested Applications:</b> WB, IF/ICC, ELISA	<b>Positive Controls:</b> WB : HeLa cells, mouse liver tissue, SGC-7901 cells, PC-3 cells, mouse pancreas tissue, A375 cells
<b>Cited Applications:</b> WB, IHC	<b>IF/ICC :</b> A375 cells,
<b>Species Specificity:</b> human, mouse, rat	
<b>Cited Species:</b> human, mouse	

## Background Information

### Notable Publications

Author	Pubmed ID	Journal	Application
Yangchao Dong	26389898	Int J Mol Sci	WB
Ru Chen	25347153	Lab Invest	IHC
Ningrui Bi	32627011	Oncol Rep	IHC

## Storage

**Storage:**  
Store at -20°C. Stable for one year after shipment.  
**Storage Buffer:**  
PBS with 0.02% sodium azide and 50% glycerol pH 7.3.  
Aliquoting is unnecessary for -20°C storage

For technical support and original validation data for this product please contact:

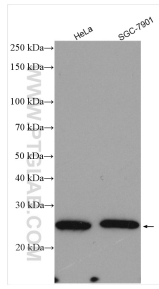
T: 4006900926

E: [Proteintech-CN@ptglab.com](mailto:Proteintech-CN@ptglab.com)

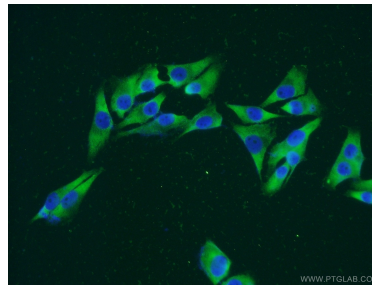
W: [ptgcn.com](http://ptgcn.com)

**This product is exclusively available under Proteintech Group brand and is not available to purchase from any other manufacturer.**

## Selected Validation Data



Various lysates were subjected to SDS PAGE followed by western blot with 18228-1-AP (RPS8 antibody) at dilution of 1:1000 incubated at room temperature for 1.5 hours.



Immunofluorescent analysis of A375 cells using 18228-1-AP (RPS8 antibody) at dilution of 1:50 and Alexa Fluor 488-conjugated AffiniPure Goat Anti-Rabbit IgG(H+L).