

For Research Use Only

# CD177 Polyclonal antibody

Catalog Number: 18264-1-AP



## Basic Information

<b>Catalog Number:</b> 18264-1-AP	<b>GenBank Accession Number:</b> BC029167	<b>Purification Method:</b> Antigen affinity purification
<b>Size:</b> 850 µg/ml	<b>GeneID (NCBI):</b> 57126	<b>Recommended Dilutions:</b> WB 1:1000-1:8000
<b>Source:</b> Rabbit	<b>UNIPROT ID:</b> Q8N6Q3	
<b>Isotype:</b> IgG	<b>Full Name:</b> CD177 molecule	
<b>Immunogen Catalog Number:</b> AG13146	<b>Calculated MW:</b> 437 aa, 46 kDa	
	<b>Observed MW:</b> 100-130 kDa	

## Applications

<b>Tested Applications:</b> WB, ELISA	<b>Positive Controls:</b> WB : mouse bone marrow,
<b>Species Specificity:</b> human, mouse	

## Background Information

CD177, also known as NB1, HNA-2a or PRV-1, is a glycosylphosphatidylinositol (GPI)-anchored glycoprotein that belongs to the uPAR/CD59/Ly6 snake toxin superfamily (PMID: 17898576). It is expressed exclusively by neutrophils, neutrophilic metamyelocytes, and myelocytes (PMID: 17580308). CD177 interacts with  $\beta$  2 integrin CD11b/CD18 and CD11a/CD18, PECAM-1, and participates in neutrophil activation and transmigration (PMID: 17580308; 21193407). CD177 has been identified as a useful biomarker for myeloproliferative diseases (PMID: 17898576).

## Storage

**Storage:**  
Store at -20°C. Stable for one year after shipment.  
**Storage Buffer:**  
PBS with 0.02% sodium azide and 50% glycerol pH 7.3.  
Aliquoting is unnecessary for -20°C storage

For technical support and original validation data for this product please contact:

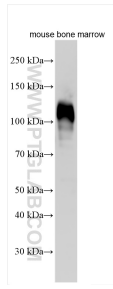
T: 4006900926

E: [Proteintech-CN@ptglab.com](mailto:Proteintech-CN@ptglab.com)

W: [ptgcn.com](http://ptgcn.com)

**This product is exclusively available under Proteintech Group brand and is not available to purchase from any other manufacturer.**

## Selected Validation Data



mouse bone marrow tissue was subjected to SDS PAGE followed by western blot with 18264-1-AP (CD177 antibody) at dilution of 1:4000 incubated at room temperature for 1.5 hours.