

For Research Use Only

HRAS-Specific Polyclonal antibody

Catalog Number: 18295-1-AP

Featured Product

50 Publications



Basic Information

Catalog Number:

18295-1-AP

Size:

700 µg/ml

Source:

Rabbit

Isotype:

IgG

GenBank Accession Number:

BC006499

GeneID (NCBI):

3265

UNIPROT ID:

P01112

Full Name:

v-Ha-ras Harvey rat sarcoma viral oncogene homolog

Calculated MW:

21 kDa

Observed MW:

21 kDa

Purification Method:

Antigen affinity purification

Recommended Dilutions:

WB 1:500-1:2000

IP 0.5-4.0 µg for 1.0-3.0 mg of total protein lysate

IF 1:200-1:800

Applications

Tested Applications:

FC (Intra), IF/ICC, IP, WB, ELISA

Cited Applications:

WB, IP, IF, IHC

Species Specificity:

human, mouse, rat

Cited Species:

human, rat, mouse

Positive Controls:

WB : HEK-293 cells, SH-SY5Y cells, PC-3 cells, C6 cells, mouse kidney tissue, rat tissue, NIH/3T3 cells

IP : mouse brain tissue, HEK-293 cells

IF : MCF-7 cells,

Background Information

HRAS, also named as c-bas/has and RASH1, is v-Ha-ras Harvey rat sarcoma viral oncogene homolog from the mammalian ras gene family and it is a member of the small GTPase superfamily. RAS proteins are involved in signal transduction pathways, and bind GDP/GTP and possess intrinsic GTPase activity. Defects in HRAS are a cause of cancer. The antibody is specific to HRAS, can't recognize NRAS and KRAS.

Notable Publications

Author	Pubmed ID	Journal	Application
Andrew M Waters	28951536	Sci Signal	WB
Thomas McFall	31551296	Sci Signal	WB
Hiroshi Senoo	34551282	Mol Cell	IP

Storage

Storage:

Store at -20°C. Stable for one year after shipment.

Storage Buffer:

PBS with 0.02% sodium azide and 50% glycerol pH 7.3.

Aliquoting is unnecessary for -20°C storage

For technical support and original validation data for this product please contact:

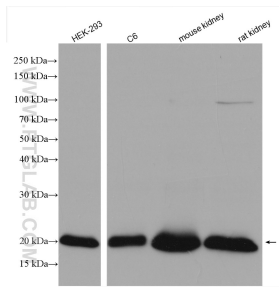
T: 4006900926

E: Proteintech-CN@ptglab.com

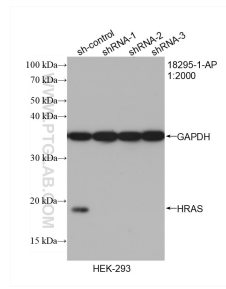
W: ptgcn.com

This product is exclusively available under Proteintech Group brand and is not available to purchase from any other manufacturer.

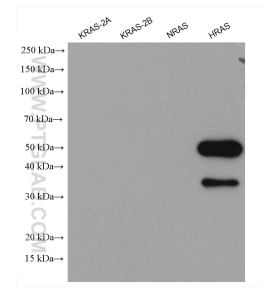
Selected Validation Data



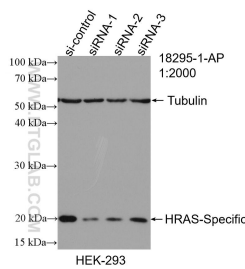
Various lysates were subjected to SDS PAGE followed by western blot with 18295-1-AP (HRAS-Specific antibody) at dilution of 1:1000 incubated at room temperature for 1.5 hours.



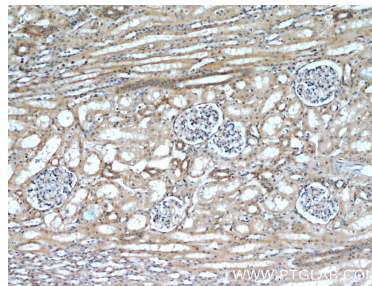
WB result of HRAS-Specific antibody (18295-1-AP; 1:2000; incubated at room temperature for 1.5 hours) with sh-Control and sh-HRAS-Specific transfected HEK-293 cells.



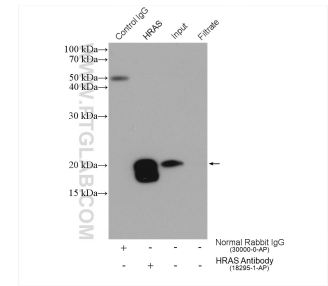
Recombinant proteins (ag27444 (6³⁵His tag-KRAS-2A), ag21645(6³⁵His tag-KRAS-2B), ag29746(6³⁵His tag-NRAS), ag23265(GST-HRAS)) were subjected to SDS PAGE followed by western blot with 16155-1-AP (KRAS-2B-specific antibody) at dilution of 1:2000 incubated at room temperature for 1.5 hours.



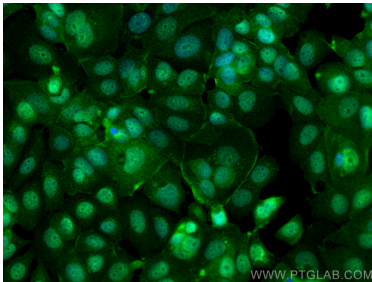
HEK-293 cells were subjected to SDS PAGE followed by western blot with 18295-1-AP (HRAS-Specific antibody) at dilution of 1:2000 incubated at room temperature for 1.5 hours.



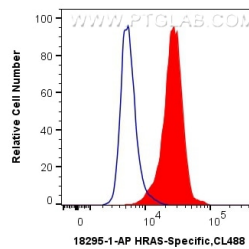
Immunohistochemical analysis of paraffin-embedded human kidney slide using 18295-1-AP (HRAS-Specific Antibody) at dilution of 1:50.



IP result of anti-HRAS-Specific (IP:18295-1-AP, 4ug; Detection:18295-1-AP 1:1000) with mouse brain tissue lysate 1840 ug.



Immunofluorescent analysis of (4% PFA) fixed MCF-7 cells using HRAS-Specific antibody (18295-1-AP) at dilution of 1:400 and CoraLite® 488-Conjugated AffiniPure Goat Anti-Rabbit IgG(H+L).



1X10⁶ HeLa cells were intracellularly stained with 0.4 ug Anti-Human HRAS-Specific (18295-1-AP) and CoraLite® 488-Conjugated AffiniPure Goat Anti-Rabbit IgG(H+L) at dilution 1:1000 (red), or 0.4 ug Control Antibody. Cells were fixed with 4% PFA and permeabilized with Flow Cytometry Perm Buffer (PF00011-C).