

For Research Use Only

# ITM2A Polyclonal antibody

Catalog Number: 18306-1-AP **6 Publications**



## Basic Information

<b>Catalog Number:</b> 18306-1-AP	<b>GenBank Accession Number:</b> BC040437	<b>Purification Method:</b> Antigen affinity purification
<b>Size:</b> 300 µg/ml	<b>GeneID (NCBI):</b> 9452	<b>Recommended Dilutions:</b> WB 1:5000-1:50000
<b>Source:</b> Rabbit	<b>UNIPROT ID:</b> O43736	
<b>Isotype:</b> IgG	<b>Full Name:</b> integral membrane protein 2A	
	<b>Calculated MW:</b> 30 kDa	
	<b>Observed MW:</b> 32 kDa	

## Applications

<b>Tested Applications:</b> WB, ELISA	<b>Positive Controls:</b> WB : A549 cells, HepG2 cells, Jurkat cells
<b>Cited Applications:</b> WB, IF, IHC	
<b>Species Specificity:</b> human, mouse, rat	
<b>Cited Species:</b> human, mouse	

## Background Information

ITM2A, also named BRICD2A and E25A, is a member of type II integral membrane (ITM2) protein family. ITM2A expression is high in osteogenic and lymphoid tissues, while both ITM2B and ITM2C are expressed in brain. There are 5 articles specifically referring to this gene in PubMed. Proteins are expected to localize in various compartments (cytoplasm, integral to membrane). No phenotype has yet been reported to our knowledge: this gene's in vivo function is yet unknown.

## Notable Publications

Author	Pubmed ID	Journal	Application
Alicia A Cutler	35733848	iScience	IF
Céline Cegarra	35313913	Fluids Barriers CNS	IF
Makiko Kihara	25079563	PLoS One	IHC

## Storage

**Storage:**  
Store at -20°C. Stable for one year after shipment.  
**Storage Buffer:**  
PBS with 0.02% sodium azide and 50% glycerol pH 7.3.  
Aliquoting is unnecessary for -20°C storage

For technical support and original validation data for this product please contact:

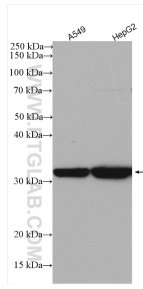
T: 4006900926

E: [Proteintech-CN@ptglab.com](mailto:Proteintech-CN@ptglab.com)

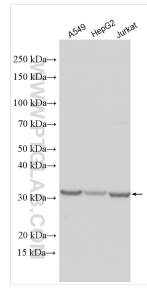
W: [ptgcn.com](http://ptgcn.com)

**This product is exclusively available under Proteintech Group brand and is not available to purchase from any other manufacturer.**

## Selected Validation Data



Various lysates were subjected to SDS PAGE followed by western blot with 18306-1-AP (ITM2A antibody) at dilution of 1:1000 incubated at room temperature for 1.5 hours.



Various lysates were subjected to SDS PAGE followed by western blot with 18306-1-AP (ITM2A antibody) at dilution of 1:15000 incubated at room temperature for 1.5 hours.