

For Research Use Only

CD24 Polyclonal antibody

Catalog Number: 18330-1-AP **13 Publications**



Basic Information

Catalog Number: 18330-1-AP	GenBank Accession Number: BC007674	Purification Method: Antigen affinity purification
Size: 450 µg/ml	GeneID (NCBI): 100133941	Recommended Dilutions: WB 1:500-1:1000
Source: Rabbit	UNIPROT ID: P25063	
Isotype: IgG	Full Name: CD24 molecule	
Immunogen Catalog Number: AG11679	Calculated MW: 8 kDa	
	Observed MW: 30-70 kDa	

Applications

Tested Applications: WB, ELISA	Positive Controls: WB : MCF-7 cells, Raji cells, mouse spleen tissue
Cited Applications: IF, WB	
Species Specificity: human, mouse	
Cited Species: human, rat, mouse	

Background Information

CD24 (known as heat stable antigen) is a small highly glycosylated GPI-linked sialoprotein. It is normally expressed at the surface of most B lymphocytes and differentiating neuroblasts, and it is also up-regulated in a wide variety of cancers. Studies have shown that CD24 functions in the regulation of B-cell apoptosis, leukocyte signal transduction, and leukocyte adhesion. Since it is highly glycosylated, the apparent molecular weight of CD24 could be variable, ranging from 30 kDa to 70 kDa. (Ref: Akihiko Sano, MD., 2009)

Notable Publications

Author	Pubmed ID	Journal	Application
Ke-Long Zou	36056698	Oral Dis	WB
Chang-Fu Yang	24262659	Cancer Lett	WB
Tianyi Cheng	36336028	Exp Cell Res	WB

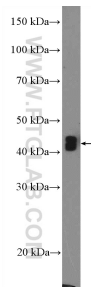
Storage

Storage:
Store at -20°C. Stable for one year after shipment.
Storage Buffer:
PBS with 0.02% sodium azide and 50% glycerol pH 7.3.
Aliquoting is unnecessary for -20°C storage

For technical support and original validation data for this product please contact:
T: 4006900926 E: Proteintech-CN@ptglab.com W: ptgcn.com

This product is exclusively available under Proteintech Group brand and is not available to purchase from any other manufacturer.

Selected Validation Data



MCF-7 cells were subjected to SDS PAGE followed by western blot with 18330-1-AP (CD24 Antibody) at dilution of 1:600 incubated at room temperature for 1.5 hours.