

For Research Use Only

# MRPS30 Polyclonal antibody

Catalog Number: 18441-1-AP **2 Publications**



## Basic Information

**Catalog Number:**

18441-1-AP

**Size:**

200 µg/ml

**Source:**

Rabbit

**Isotype:**

IgG

**Immunogen Catalog Number:**

AG13271

**GenBank Accession Number:**

BC007735

**GeneID (NCBI):**

10884

**UNIPROT ID:**

Q9NP92

**Full Name:**

mitochondrial ribosomal protein S30

**Calculated MW:**

439 aa, 50 kDa

**Observed MW:**

50 kDa

**Purification Method:**

Antigen affinity purification

**Recommended Dilutions:**

IF/ICC 1:50-1:500

## Applications

**Tested Applications:**

WB, IF/ICC, ELISA

**Cited Applications:**

WB

**Species Specificity:**

human, mouse, rat

**Cited Species:**

human

**Positive Controls:**

IF/ICC : HepG2 cells,

## Background Information

### Notable Publications

Author	Pubmed ID	Journal	Application
Xiangli Jiang	39198484	Nat Commun	WB
Liang Wang	37971521	Cell Mol Life Sci	WB

## Storage

**Storage:**

Store at -20°C. Stable for one year after shipment.

**Storage Buffer:**

PBS with 0.02% sodium azide and 50% glycerol pH 7.3.

Aliquoting is unnecessary for -20°C storage

For technical support and original validation data for this product please contact:

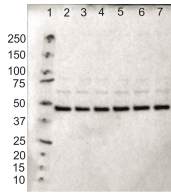
T: 4006900926

E: [Proteintech-CN@ptglab.com](mailto:Proteintech-CN@ptglab.com)

W: [ptgcn.com](http://ptgcn.com)

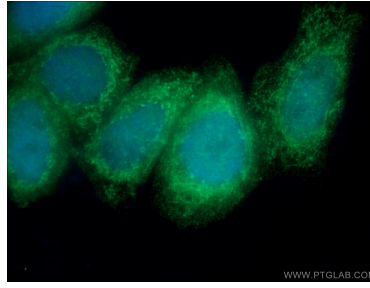
**This product is exclusively available under Proteintech Group brand and is not available to purchase from any other manufacturer.**

## Selected Validation Data



Lane 1 contains BioRad dual color protein standard.  
Lanes 2-7 each contain 15 $\mu$ g of control human myotube protein.

WB result of MRPS30 antibody (18441-1-AP, 1:1000) with with 15 $\mu$ g of control human myotube protein by Max Pohjanpelto, University of Helsinki.



Immunofluorescent analysis of (4% PFA) fixed HepG2 cells using 18441-1-AP (MRPS30 antibody) at dilution of 1:50 and Alexa Fluor 488-conjugated Goat Anti-Rabbit IgG(H+L).