

For Research Use Only

# PRUNE Polyclonal antibody, PBS Only

Catalog Number: 18537-1-PBS

Featured Product



## Basic Information

Catalog Number:

18537-1-PBS

Size:

1 mg/ml

Source:

Rabbit

Isotype:

IgG

Immunogen Catalog Number:

AG13275

GenBank Accession Number:

BC025304

GeneID (NCBI):

58497

UNIPROT ID:

Q86TP1

Full Name:

prune homolog (Drosophila)

Calculated MW:

453 aa, 50 kDa

Observed MW:

60 kDa

Purification Method:

Antigen affinity purification

## Applications

Tested Applications:

WB, IHC, IF/ICC, IP, Indirect ELISA

Species Specificity:

human, mouse, rat

## Background Information

### Storage

Storage:

Store at -80°C.

The product is shipped with ice packs. Upon receipt, store it immediately at -80°C

Storage Buffer:

PBS Only

For technical support and original validation data for this product please contact:

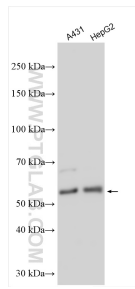
T: 4006900926

E: [Proteintech-CN@ptglab.com](mailto:Proteintech-CN@ptglab.com)

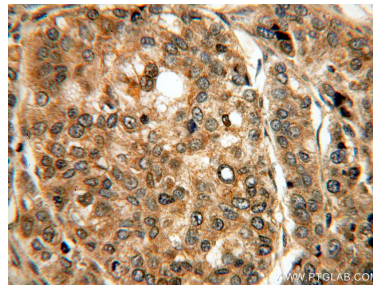
W: [ptgcn.com](http://ptgcn.com)

This product is exclusively available under Proteintech Group brand and is not available to purchase from any other manufacturer.

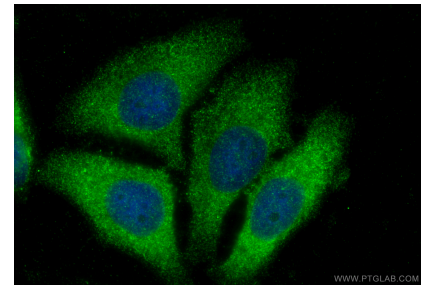
## Selected Validation Data



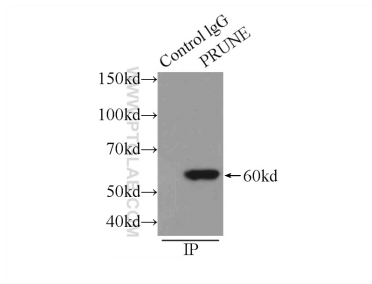
Various lysates were subjected to SDS PAGE followed by western blot with 18537-1-AP (PRUNE antibody) at dilution of 1:2000 incubated at room temperature for 1.5 hours. This data was developed using the same antibody clone with 18537-1-PBS in a different storage buffer formulation.



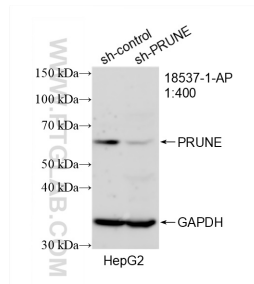
Immunohistochemical analysis of paraffin-embedded human liver cancer using 18537-1-AP (PRUNE antibody) at dilution of 1:100 (under 40x lens). This data was developed using the same antibody clone with 18537-1-PBS in a different storage buffer formulation.



Immunofluorescent analysis of (-20°C Ethanol) fixed HepG2 cells using PRUNE antibody (18537-1-AP) at dilution of 1:200 and Multi-rAb CoraLite® Plus 488-Goat Anti-Rabbit Recombinant Secondary Antibody (H+L) (RGAR002). This data was developed using the same antibody clone with 18537-1-PBS in a different storage buffer formulation.



IP result of anti-PRUNE (IP:18537-1-AP, 3ug; Detection:18537-1-AP 1:500) with HepG2 cells lysate 1720ug. This data was developed using the same antibody clone with 18537-1-PBS in a different storage buffer formulation.



WB result of PRUNE antibody (18537-1-AP; 1:400; incubated at room temperature for 1.5 hours) with sh-Control and sh-PRUNE transfected HepG2 cells. This data was developed using the same antibody clone with 18537-1-PBS in a different storage buffer formulation.