

QPCT Polyclonal antibody

Catalog Number: 18571-1-AP

Basic Information

Catalog Number:

18571-1-AP

Size:

550 µg/ml

Source:

Rabbit

Isotype:

IgG

Immunogen Catalog Number:

AG13416

GenBank Accession Number:

BC047756

GeneID (NCBI):

25797

UNIPROT ID:

Q16769

Full Name:

glutaminyl-peptide cyclotransferase

Calculated MW:

361 aa, 41 kDa

Observed MW:

41 kDa, 35 kDa

Purification Method:

Antigen affinity purification

Recommended Dilutions:

WB 1:500-1:2000

Applications

Tested Applications:

WB, ELISA

Species Specificity:

human

Positive Controls:

WB : Caki-2 cells, human urine sample

Background Information

Glutaminyl-peptide cyclotransferase (QPCT) gene encodes glutaminyl cyclase (QC), an enzyme that plays a role in post-translational modification of proteins by converting N-terminal glutamate to pyroglutamine. QPCT plays a specific role in promoting tumor cell proliferation, migration and angiogenesis as well as in inhibiting tumor cell apoptosis in cancers such as thyroid cancer and renal cell carcinoma (PMID: 38417050). Human QPCT has two isoforms produced by alternative splicing, 41 kDa and 35 kDa, respectively.

Storage

Storage:

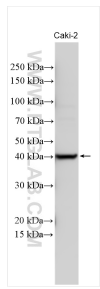
Store at -20°C. Stable for one year after shipment.

Storage Buffer:

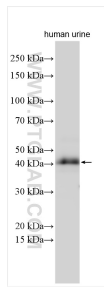
PBS with 0.02% sodium azide and 50% glycerol pH 7.3.

Aliquoting is unnecessary for -20°C storage

Selected Validation Data



Various lysates were subjected to SDS PAGE followed by western blot with 18571-1-AP (QPCT antibody) at dilution of 1:1000 incubated at room temperature for 1.5 hours.



Various lysates were subjected to SDS PAGE followed by western blot with 18571-1-AP (QPCT antibody) at dilution of 1:1000 incubated at room temperature for 1.5 hours.