

CD206 Polyclonal antibody

Catalog Number: 18704-1-AP

377 Publications

Basic Information

Catalog Number:

18704-1-AP

Size:

700 µg/ml

Source:

Rabbit

Isotype:

IgG

GenBank Accession Number:

NM_002438

GeneID (NCBI):

4360

UNIPROT ID:

P22897

Full Name:

mannose receptor, C type 1

Calculated MW:

166 kDa

Observed MW:

165-180 kDa

Purification Method:

Antigen affinity purification

Recommended Dilutions:

WB 1:500-1:1000

IHC 1:1000-1:4000

IF 1:200-1:800

Applications

Tested Applications:

FC, IF-P, IHC, WB, ELISA

Cited Applications:

FC, IF, IHC, WB

Species Specificity:

human, mouse, rat

Cited Species:

human, rat, mouse, rabbit, pig, mussel

Note-IHC: suggested antigen retrieval with TE buffer pH 9.0; (*) Alternatively, antigen retrieval may be performed with citrate buffer pH 6.0

Positive Controls:

WB : mouse liver tissue, human placenta tissue, human kidney tissue, rat liver tissue

IHC : human placenta tissue,

IF : mouse lung tissue,

Background Information

CD206, also named as MMR, CLEC13D and MRC1, is a type I membrane receptor that mediates the endocytosis of glycoproteins by macrophages. CD206 has been shown to bind high-mannose structures on the surface of potentially pathogenic viruses, bacteria, and fungi so that they can be neutralized by phagocytic engulfment. CD206 is a 170 kDa transmembrane glycoprotein which contains 5 domains: an amino-terminal cysteine-rich region, a fibronectin type II repeat, a series of eight tandem lectin-like carbohydrate recognition domains (responsible for the recognition of mannose and fucose), a transmembrane domain, and an intracellular carboxy-terminal tail. It is expressed on most tissue macrophages, in vitro derived dendritic cells, lymphatic and sinusoidal endothelia. This antibody recognizes the intracellular carboxy-terminal part of CD206 and MRC1L1. If protein aggregation exists, for optimal WB detection with this antibody, we recommend adding DTT before boiling the sample to reduce disulfide bonds.

Notable Publications

| Author | Pubmed ID | Journal | Application |
|---------------|-----------|-------------------|-------------|
| Shu-Ling Wang | 31564717 | Cell Death Dis | WB,IF |
| Shiao Tong | 36248799 | Front Immunol | WB,IHC |
| Yi-Na Zhang | 36168082 | Transl Stroke Res | IF |

Storage

Storage:

Store at -20°C. Stable for one year after shipment.

Storage Buffer:

PBS with 0.02% sodium azide and 50% glycerol pH 7.3.

Aliquoting is unnecessary for -20°C storage

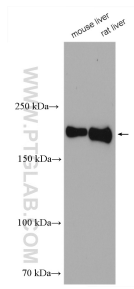
For technical support and original validation data for this product please contact:

T: 4006900926

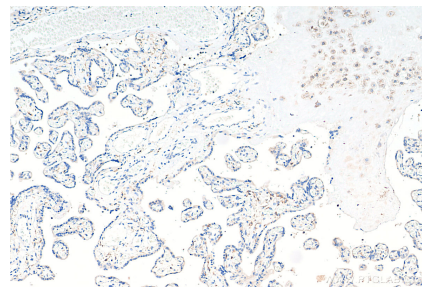
E: Proteintech-CN@ptglab.comW: ptgcn.com

This product is exclusively available under Proteintech Group brand and is not available to purchase from any other manufacturer.

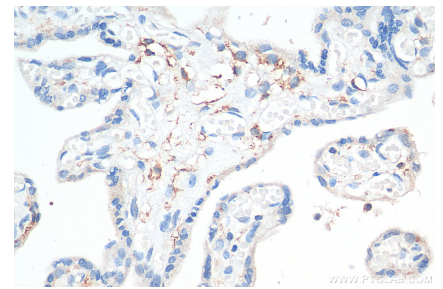
Selected Validation Data



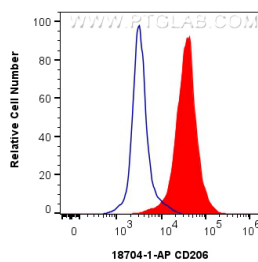
Various lysates were subjected to SDS PAGE followed by western blot with 18704-1-AP (CD206 antibody) at dilution of 1:500 incubated at room temperature for 1.5 hours.



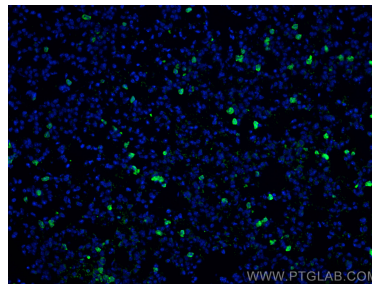
Immunohistochemical analysis of paraffin-embedded human placenta tissue slide using 18704-1-AP (CD206 antibody) at dilution of 1:2000 (under 10x lens). Heat mediated antigen retrieval with Tris-EDTA buffer (pH 9.0).



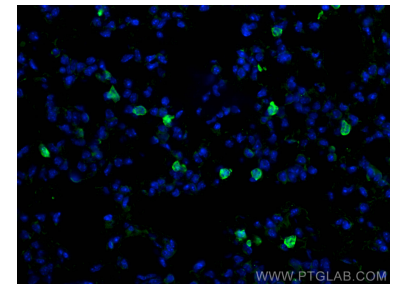
Immunohistochemical analysis of paraffin-embedded human placenta tissue slide using 18704-1-AP (CD206 antibody) at dilution of 1:2000 (under 40x lens). Heat mediated antigen retrieval with Tris-EDTA buffer (pH 9.0).



1×10^6 RAW 264.7 cells were intracellularly stained with 0.4 μ g Anti-Human CD206 (18704-1-AP) and CoraLite®488-Conjugated AffiniPure Goat Anti-Rabbit IgG(H+L) at dilution 1:1000 (red), or 0.4 μ g Rabbit IgG control (30000-0-AP) and CoraLite®488-Conjugated AffiniPure Goat Anti-Rabbit IgG(H+L) at dilution 1:1000 (blue). Cells were fixed with 4% PFA and permeabilized with Flow Cytometry Perm Buffer (PF00011-C).



Immunofluorescent analysis of (4% PFA) fixed paraffin-embedded mouse lung tissue using CD206 antibody (18704-1-AP) at dilution of 1:400 and CoraLite®488-Conjugated AffiniPure Goat Anti-Rabbit IgG(H+L) (SA00013-2). Heat mediated antigen retrieval with Tris-EDTA buffer (pH 9.0).



Immunofluorescent analysis of (4% PFA) fixed paraffin-embedded mouse lung tissue using CD206 antibody (18704-1-AP) at dilution of 1:400 and CoraLite®488-Conjugated AffiniPure Goat Anti-Rabbit IgG(H+L) (SA00013-2). Heat mediated antigen retrieval with Tris-EDTA buffer (pH 9.0).