

For Research Use Only

GABARAPL2-Specific Polyclonal antibody

Catalog Number: 18724-1-AP

Featured Product

13 Publications



Basic Information

Catalog Number:

18724-1-AP

Concentration:

450 ug/ml

Source:

Rabbit

Isotype:

IgG

GenBank Accession Number:

BC005985

GeneID (NCBI):

11345

UNIPROT ID:

P60520

Full Name:

GABA(A) receptor-associated protein-like 2

Calculated MW:

14 kDa

Observed MW:

14 kDa

Purification Method:

Antigen affinity purification

Recommended Dilutions:

WB 1:500-1:1000

IHC 1:20-1:200

IF/ICC 1:50-1:500

Applications

Tested Applications:

WB, IHC, IF/ICC, FC (Intra), ELISA

Cited Applications:

WB, IHC, IF

Species Specificity:

human, mouse, rat

Cited Species:

human, mouse, rat

Note-IHC: suggested antigen retrieval with TE buffer pH 9.0; (*) Alternatively, antigen retrieval may be performed with citrate buffer pH 6.0

Positive Controls:

WB : COLO 320 cells, human brain tissue, mouse brain tissue, mouse spleen tissue, PC-3 cells

IHC : human heart tissue, human brain tissue

IF/ICC : Chloroquine treated HepG2 cells,

Background Information

GABARAPL2 (also known as Golgi-associated ATPase enhancer of 16 kDa; GATE-16) was originally characterized as a factor essential for intra-Golgi protein transport. Later GABARAPL2 along with LC3 and GABARAP, were identified as the homologs of yeast ATG8 which is a unique ubiquitin-like protein essential for autophagy. When induced GABARAPL2 is first digested by ATG4 family enzymes to become its mature form: GABARAPL2-I, later conjugated to PE lipid as lipidated form: GABARAPL2-II. The lipidated form migrates faster than its mature form on SDS-PAGE gel. GABARAPL2 is strongly expressed in the brain. This antibody is specific to GABARAPL2. It has no cross-reaction to other GABARAP protein.

Notable Publications

Author	Pubmed ID	Journal	Application
Naoya Sakaguchi	33042141	Front Immunol	WB
Clémence Taisne	30872707	Sci Rep	
Hye Young Ryu	33654220	Exp Mol Med	WB

Storage

Storage:

Store at -20°C. Stable for one year after shipment.

Storage Buffer:

PBS with 0.02% sodium azide and 50% glycerol, pH7.3

Aliquoting is unnecessary for -20°C storage

For technical support and original validation data for this product please contact:

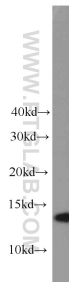
T: 4006900926

E: Proteintech-CN@ptglab.com

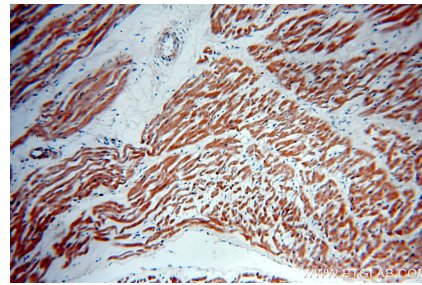
W: ptgcn.com

This product is exclusively available under Proteintech Group brand and is not available to purchase from any other manufacturer.

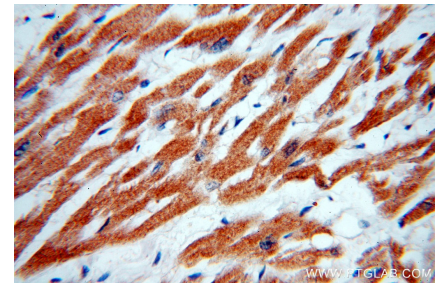
Selected Validation Data



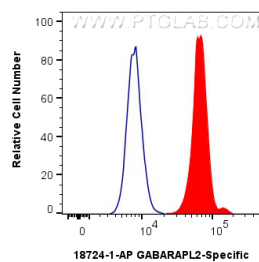
COLO 320 cells were subjected to SDS PAGE followed by western blot with 18724-1-AP (GABARAPL2-Specific antibody) at dilution of 1:800 incubated at room temperature for 1.5 hours.



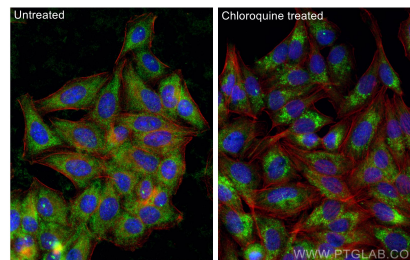
Immunohistochemical analysis of paraffin-embedded human heart using 18724-1-AP (GABARAPL2-Specific antibody) at dilution of 1:50 (under 10x lens).



Immunohistochemical analysis of paraffin-embedded human heart using 18724-1-AP (GABARAPL2-Specific antibody) at dilution of 1:50 (under 40x lens).



1×10^6 HepG2 cells were intracellularly stained with 0.25 μ g GABARAPL2-Specific Polyclonal antibody (18724-1-AP) and CoraLite®488-Conjugated Goat Anti-Rabbit IgG(H+L) (SA00013-2) (red), or 0.25 μ g Isotype Control (blue). Cells were fixed with 4% PFA and permeabilized with Flow Cytometry Perm Buffer (PF00011-C).



Immunofluorescent analysis of (-20°C Ethanol) fixed Chloroquine treated HepG2 cells using GABARAPL2-Specific antibody (18724-1-AP) at dilution of 1:200 and CoraLite®488-Conjugated AffiniPure Goat Anti-Rabbit IgG(H+L) (SA00013-2), CL594-phalloidin (red).