

For Research Use Only

GCHFR Polyclonal antibody

Catalog Number: 18809-1-AP

Featured Product

1 Publications



Basic Information

Catalog Number:

18809-1-AP

Size:

400 µg/ml

Source:

Rabbit

Isotype:

IgG

GenBank Accession Number:

BC112262

GeneID (NCBI):

2644

UNIPROT ID:

P30047

Full Name:

GTP cyclohydrolase I feedback regulator

Calculated MW:

10 kDa

Observed MW:

10 kDa

Purification Method:

Antigen affinity purification

Recommended Dilutions:

WB 1:1000-1:4000

IHC 1:20-1:200

Applications

Tested Applications:

IHC, WB, ELISA

Cited Applications:

WB, IHC

Species Specificity:

human, mouse

Cited Species:

mouse

Note-IHC: suggested antigen retrieval with TE buffer pH 9.0; (*) Alternatively, antigen retrieval may be performed with citrate buffer pH 6.0

Positive Controls:

WB : HeLa cells, HepG2 cells

IHC : human cervix tissue,

Background Information

GCHFR, also named as p35 and GFRP, belongs to the GFRP family. GCHFR mediates tetrahydrobiopterin inhibition of GTP cyclohydrolase 1. It modulates BH4 synthesis and oxidative stress. This inhibition is reversed by L-phenylalanine.

Notable Publications

Author	Pubmed ID	Journal	Application
Pathak Rupak R	23521531	Antioxid Redox Signal	WB, IHC

Storage

Storage:

Store at -20°C. Stable for one year after shipment.

Storage Buffer:

PBS with 0.02% sodium azide and 50% glycerol pH 7.3.

Aliquoting is unnecessary for -20°C storage

For technical support and original validation data for this product please contact:

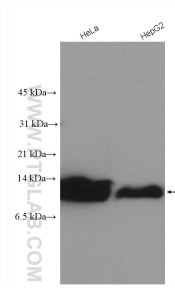
T: 4006900926

E: Proteintech-CN@ptglab.com

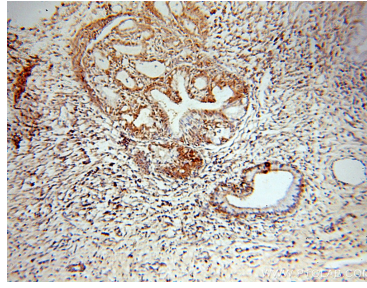
W: ptgcn.com

This product is exclusively available under Proteintech Group brand and is not available to purchase from any other manufacturer.

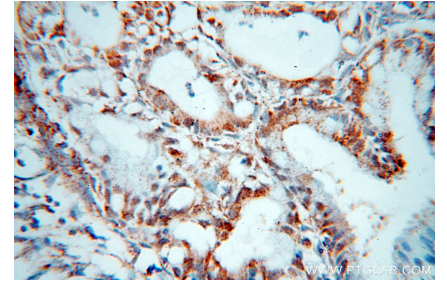
Selected Validation Data



Various lysates were subjected to SDS PAGE followed by western blot with 18809-1-AP (GCHFR antibody) at dilution of 1:2000 incubated at room temperature for 1.5 hours.



Immunohistochemical analysis of paraffin-embedded human cervix using 18809-1-AP (GCHFR antibody) at dilution of 1:100 (under 10x lens).



Immunohistochemical analysis of paraffin-embedded human cervix using 18809-1-AP (GCHFR antibody) at dilution of 1:100 (under 40x lens).