

For Research Use Only

# CCNI2 Polyclonal antibody

Catalog Number: 18822-1-AP **1 Publications**



## Basic Information

**Catalog Number:**

18822-1-AP

**Size:**

350 µg/ml

**Source:**

Rabbit

**Isotype:**

IgG

**GenBank Accession Number:**

BC144417

**GeneID (NCBI):**

645121

**UNIPROT ID:**

Q6ZMN8

**Full Name:**

cyclin I family, member 2

**Calculated MW:**

41 kDa

**Observed MW:**

42 kDa

**Purification Method:**

Antigen affinity purification

**Recommended Dilutions:**

WB 1:500-1:2000

IHC 1:20-1:200

## Applications

**Tested Applications:**

IHC, WB, ELISA

**Cited Applications:**

WB, IF

**Species Specificity:**

human

**Cited Species:**

mouse

**Note-IHC: suggested antigen retrieval with TE buffer pH 9.0; (\*) Alternatively, antigen retrieval may be performed with citrate buffer pH 6.0**

**Positive Controls:**

WB : HepG2 cells, human brain tissue, MCF-7 cells

IHC : human lung cancer tissue,

## Background Information

CCNI2 belongs to the cyclin family.

## Notable Publications

Author	Pubmed ID	Journal	Application
Chengcheng Liu	28112194	Sci Rep	WB,IF

## Storage

**Storage:**

Store at -20°C. Stable for one year after shipment.

**Storage Buffer:**

PBS with 0.02% sodium azide and 50% glycerol pH 7.3.

Aliquoting is unnecessary for -20°C storage

For technical support and original validation data for this product please contact:

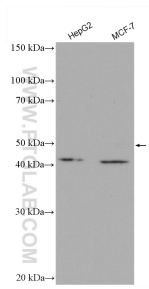
T: 4006900926

E: Proteintech-CN@ptglab.com

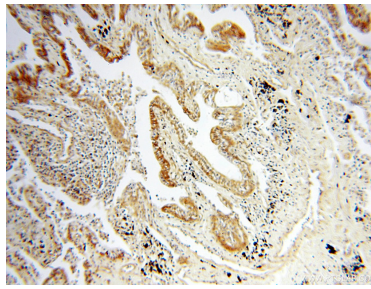
W: ptgcn.com

**This product is exclusively available under Proteintech Group brand and is not available to purchase from any other manufacturer.**

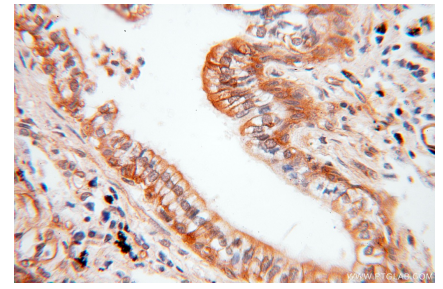
## Selected Validation Data



Various lysates were subjected to SDS PAGE followed by western blot with 18822-1-AP (CCNI2 antibody) at dilution of 1:1000 incubated at room temperature for 1.5 hours.



Immunohistochemical analysis of paraffin-embedded human lung cancer using 18822-1-AP (CCNI2 antibody) at dilution of 1:100 (under 10x lens).



Immunohistochemical analysis of paraffin-embedded human lung cancer using 18822-1-AP (CCNI2 antibody) at dilution of 1:100 (under 40x lens).