

For Research Use Only

TULP1 Polyclonal antibody

Catalog Number:18971-1-AP

1 Publications



Basic Information

Catalog Number: 18971-1-AP	GenBank Accession Number: BC032714	Purification Method: Antigen affinity purification
Size: 600 ug/ml	GeneID (NCBI): 7287	Recommended Dilutions: WB 1:500-1:2000 IHC 1:20-1:200
Source: Rabbit	UNIPROT ID: O00294	
Isotype: IgG	Full Name: tubby like protein 1	
Immunogen Catalog Number: AG5598	Calculated MW: 489 aa, 55 kDa	
	Observed MW: 70 kDa	

Applications

Tested Applications: WB, IHC, ELISA	Positive Controls: WB : Y79 cells, human brain tissue, mouse retina tissue IHC : human eye tissue,
Cited Applications: WB	
Species Specificity: human, mouse, rat	
Cited Species: mouse	
Note-IHC: suggested antigen retrieval with TE buffer pH 9.0; (*) Alternatively, antigen retrieval may be performed with citrate buffer pH 6.0	

Background Information

TULP1, also known as RP14, LCA15, and TUBL1, is a member of the tubby-like protein (TULP) family. TULP1 is expressed exclusively in the retina and is essential for the transport of rhodopsin from its site of synthesis in the inner segments through the connecting cilium to the outer segments (PMID: 17620573). Mutations in TULP1 are associated with Retinitis pigmentosa 14 and Leber congenital amaurosis-15 (PMID: 17620573, 17962469).

Notable Publications

Author	Pubmed ID	Journal	Application
Mingzhu Yang	39333705	Sci Rep	WB

Storage

Storage:
Store at -20°C. Stable for one year after shipment.
Storage Buffer:
PBS with 0.02% sodium azide and 50% glycerol pH 7.3.
Aliquoting is unnecessary for -20°C storage

For technical support and original validation data for this product please contact:

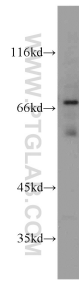
T: 4006900926

E: Proteintech-CN@ptglab.com

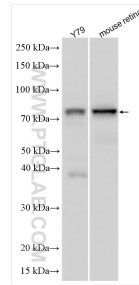
W: ptgcn.com

This product is exclusively available under Proteintech Group brand and is not available to purchase from any other manufacturer.

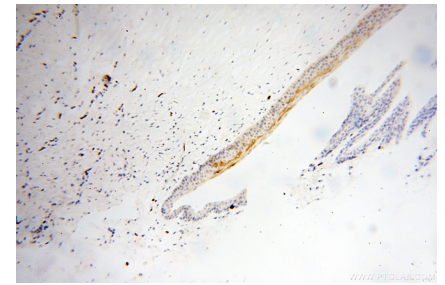
Selected Validation Data



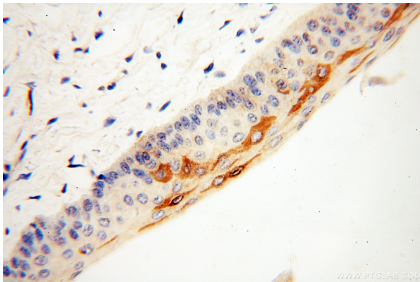
human brain tissue were subjected to SDS PAGE followed by western blot with 18971-1-AP (TULP1 antibody) at dilution of 1:500 incubated at room temperature for 1.5 hours.



Various lysates were subjected to SDS PAGE followed by western blot with 18971-1-AP (TULP1 antibody) at dilution of 1:1000 incubated at room temperature for 1.5 hours.



Immunohistochemical analysis of paraffin-embedded human eye using 18971-1-AP (TULP1 antibody) at dilution of 1:50 (under 10x lens).



Immunohistochemical analysis of paraffin-embedded human eye using 18971-1-AP (TULP1 antibody) at dilution of 1:50 (under 40x lens).