

For Research Use Only

# FKBP6 Polyclonal antibody

Catalog Number: 19163-1-AP



## Basic Information

<b>Catalog Number:</b> 19163-1-AP	<b>GenBank Accession Number:</b> BC036817	<b>Purification Method:</b> Antigen affinity purification
<b>Size:</b> 500 µg/ml	<b>GeneID (NCBI):</b> 8468	<b>Recommended Dilutions:</b> WB 1:500-1:1000 IF/ICC 1:10-1:100
<b>Source:</b> Rabbit	<b>UNIPROT ID:</b> O75344	
<b>Isotype:</b> IgG	<b>Full Name:</b> FK506 binding protein 6, 36kDa	
<b>Immunogen Catalog Number:</b> AG4642	<b>Calculated MW:</b> 327 aa, 37 kDa	
	<b>Observed MW:</b> 36 kDa	

## Applications

<b>Tested Applications:</b> IF/ICC, WB, ELISA	<b>Positive Controls:</b>
<b>Species Specificity:</b> human, mouse, rat	<b>WB :</b> rat testis tissue, human testis tissue, mouse testis tissue <b>IF/ICC :</b> MCF-7 cells,

## Background Information

Inactive peptidyl-prolyl cis-trans isomerase FKBP6 (FKBP6), also known as 36 kDa FK506-binding protein (36 kDa FKBP; FKBP-36), is a member of a gene family that contains a prolyl isomerase/FK506 binding domain and tetra-tryptophan protein-protein interaction domains (PMID: 9782077). It has been linked to the secondary piRNA biogenesis in fetal male mouse germ cells ( PMID: 22902560).

## Storage

**Storage:**  
Store at -20°C. Stable for one year after shipment.  
**Storage Buffer:**  
PBS with 0.02% sodium azide and 50% glycerol pH 7.3.  
Aliquoting is unnecessary for -20°C storage

For technical support and original validation data for this product please contact:

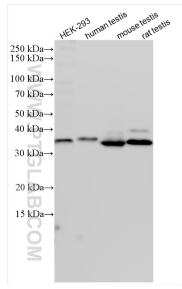
T: 4006900926

E: Proteintech-CN@ptglab.com

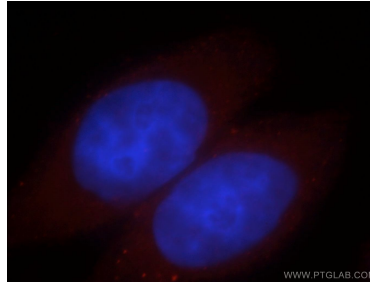
W: ptgcn.com

This product is exclusively available under Proteintech Group brand and is not available to purchase from any other manufacturer.

## Selected Validation Data



Various lysates were subjected to SDS PAGE followed by western blot with 19163-1-AP (FKBP6 antibody) at dilution of 1:800 incubated at room temperature for 1.5 hours.



Immunofluorescent analysis of MCF-7 cells, using FKBP6 antibody 19163-1-AP at 1:25 dilution and Rhodamine-labeled goat anti-rabbit IgG (red). Blue pseudocolor = DAPI (fluorescent DNA dye).