

For Research Use Only

CD39/ENTPD1 Polyclonal antibody

Catalog Number: 19229-1-AP **8 Publications**



Basic Information

Catalog Number: 19229-1-AP	GenBank Accession Number: BC047664	Purification Method: Antigen affinity purification
Size: 450 µg/ml	GeneID (NCBI): 953	Recommended Dilutions: WB 1:500-1:2000 IP 0.5-4.0 µg for 1.0-3.0 mg of total protein lysate IHC 1:20-1:200
Source: Rabbit	UNIPROT ID: P49961	
Isotype: IgG	Full Name: ectonucleoside triphosphate diphosphohydrolase 1	
Immunogen Catalog Number: AG6165	Calculated MW: 58 kDa	
	Observed MW: 75-95 kDa	

Applications

Tested Applications: WB, IP, IF-P, IHC, ELISA	Positive Controls:
Cited Applications: WB, IF, IHC	WB: mouse liver tissue, HL-60 cells, mouse brain tissue, human liver tissue
Species Specificity: human, mouse, rat	IP: mouse liver tissue,
Cited Species: human, rat, mouse	IHC: human placenta tissue, human liver tissue, human tonsillitis tissue

Note-IHC: suggested antigen retrieval with TE buffer pH 9.0; (*) Alternatively, antigen retrieval may be performed with citrate buffer pH 6.0

Background Information

ENTPD1 (Ectonucleoside triphosphate diphosphohydrolase 1) is also named CD39, NTPDase 1, and Ecto-ATPDase 1 and belongs to the GDA1/CD39 NTPase family. In the nervous system, it can hydrolyze ATP and other nucleotides to regulate purinergic neurotransmission. It is a noncovalent tetrameric protein and detergent inhibition of enzymatic activity is caused by dissociation of ectoapyrase tetramers into monomers (PMID: 9733785). And it is a 70- to 100-kDa protein that is heavily N-glycosylated (PMID: 7930580). It has 3 isoforms produced by alternative splicing. CD39 preferentially occurred as a dimer that could be dissociated into monomeric forms. (PMID: 12694193). The soluble isoform of CD39 (38-478 amino acid) is located in the extracellular part and 19229-1-AP recognizes both the 3 isoforms and the soluble form of CD39 (38-478aa) molecule.

Notable Publications

Author	Pubmed ID	Journal	Application
Wenjia Liu	30210899	Bone Res	WB
Yunshuo Zhao	34648290	J Chem Inf Model	FC
Hao Cui	36436019	Cancer Immunol Immunother	WB, IHC

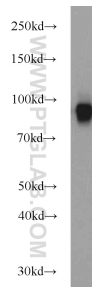
Storage

Storage:
Store at -20°C. Stable for one year after shipment.
Storage Buffer:
PBS with 0.02% sodium azide and 50% glycerol pH 7.3.
Aliquoting is unnecessary for -20°C storage

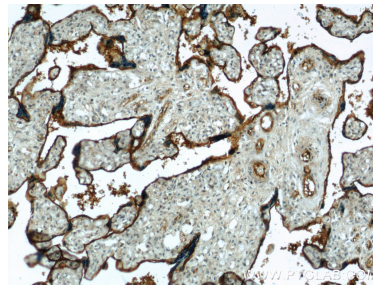
For technical support and original validation data for this product please contact:
T: 4006900926 E: Proteintech-CN@ptglab.com W: ptgcn.com

This product is exclusively available under Proteintech Group brand and is not available to purchase from any other manufacturer.

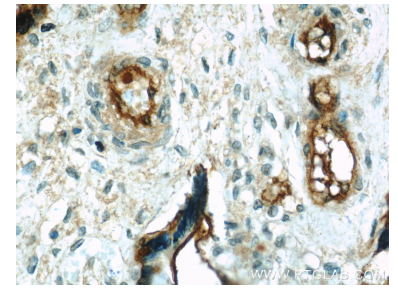
Selected Validation Data



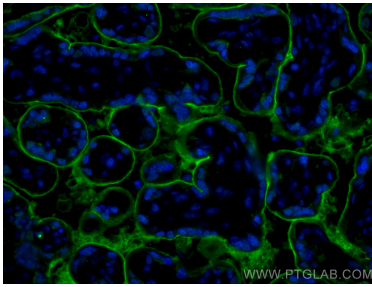
mouse liver tissue were subjected to SDS PAGE followed by western blot with 19229-1-AP (CD39 antibody) at dilution of 1:1000 incubated at room temperature for 1.5 hours.



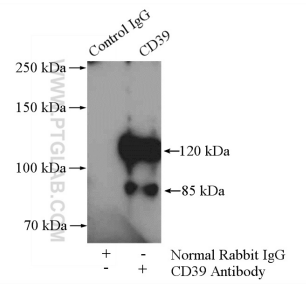
Immunohistochemical analysis of paraffin-embedded human placenta using 19229-1-AP (CD39 antibody) at dilution of 1:50 (under 10x lens).



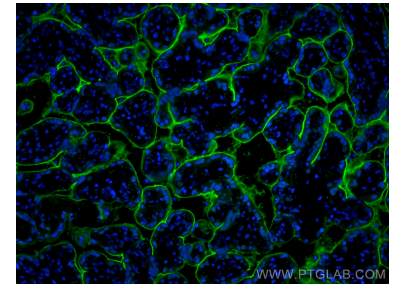
Immunohistochemical analysis of paraffin-embedded human placenta using 19229-1-AP (CD39 antibody) at dilution of 1:50 (under 40x lens).



Immunofluorescent analysis of (4% PFA) fixed human placenta tissue using CD39/ENTPD1 antibody (19229-1-AP) at dilution of 1:200 and CoraLite@488-Conjugated AffiniPure Goat Anti-Rabbit IgG(H+L).



IP result of anti-CD39/ENTPD1 (IP:19229-1-AP, 4ug; Detection:19229-1-AP 1:800) with mouse liver tissue lysate 4000ug.



Immunofluorescent analysis of (4% PFA) fixed human placenta tissue using CD39/ENTPD1 antibody (19229-1-AP) at dilution of 1:200 and CoraLite@488-Conjugated AffiniPure Goat Anti-Rabbit IgG(H+L).