

For Research Use Only

# SEMA3C Polyclonal antibody

Catalog Number: 19242-1-AP

Featured Product

2 Publications



## Basic Information

**Catalog Number:**

19242-1-AP

**Size:**

220 µg/ml

**Source:**

Rabbit

**Isotype:**

IgG

**Immunogen Catalog Number:**

AG5480

**GenBank Accession Number:**

BC030690

**GeneID (NCBI):**

10512

**UNIPROT ID:**

Q99985

**Full Name:**

sema domain, immunoglobulin domain (Ig), short basic domain, secreted, (semaphorin) 3C

**Calculated MW:**

85 kDa

**Observed MW:**

70 kDa

**Purification Method:**

Antigen affinity purification

**Recommended Dilutions:**

WB 1:500-1:2000

## Applications

**Tested Applications:**

WB, ELISA

**Cited Applications:**

WB

**Species Specificity:**

human, mouse

**Cited Species:**

human

**Positive Controls:**

WB : mouse heart tissue,

## Background Information

SEMA3C (Semaphorin 3C) is associated with tumor progression and poor prognosis across multiple tumor types, including pancreatic, gastric, prostate, and breast cancer, as well as glioma. It is worth noting that full-length SEMA3C has also been reported as a tumor suppressor factor by suppressing tumor lymphangiogenesis and metastasis (PMID: 31649890).

## Notable Publications

Author	Pubmed ID	Journal	Application
Ruoyan Liu	31649890	Front Oncol	WB
Dalin Zhang	35785187	Front Oncol	WB

## Storage

**Storage:**

Store at -20°C. Stable for one year after shipment.

**Storage Buffer:**

PBS with 0.02% sodium azide and 50% glycerol pH 7.3.

Aliquoting is unnecessary for -20°C storage

For technical support and original validation data for this product please contact:

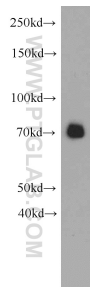
T: 4006900926

E: Proteintech-CN@ptglab.com

W: ptgcn.com

This product is exclusively available under Proteintech Group brand and is not available to purchase from any other manufacturer.

## Selected Validation Data



mouse heart tissue were subjected to SDS PAGE followed by western blot with 19242-1-AP (SEMA3C antibody) at dilution of 1:500 incubated at room temperature for 1.5 hours.