

For Research Use Only

# LCA5 Polyclonal antibody

Catalog Number: 19333-1-AP **7 Publications**



## Basic Information

<b>Catalog Number:</b> 19333-1-AP	<b>GenBank Accession Number:</b> BC050327	<b>Purification Method:</b> Antigen affinity purification
<b>Size:</b> 850 µg/ml	<b>GeneID (NCBI):</b> 167691	<b>Recommended Dilutions:</b> WB 1:200-1:1000
<b>Source:</b> Rabbit	<b>UNIPROT ID:</b> Q86VQ0	
<b>Isotype:</b> IgG	<b>Full Name:</b> Leber congenital amaurosis 5	
<b>Immunogen Catalog Number:</b> AG5140	<b>Calculated MW:</b> 693 aa, 80 kDa	
	<b>Observed MW:</b> 80 kDa	

## Applications

<b>Tested Applications:</b> WB, ELISA	<b>Positive Controls:</b> WB : HeLa cells,
<b>Cited Applications:</b> WB, IF, CoIP	
<b>Species Specificity:</b> human	
<b>Cited Species:</b> human, mouse, pig	

## Background Information

LCA5 (Leber congenital amaurosis 5), also named as C6orf152 or Lebercilin, is a 697 amino acids protein. LCA5 is widely expressed at the microtubules, centrosome, and primary cilia. Recent study showed that LCA5 was involved in the cause of congenital and early-onset retinal dystrophies (PMID: 24144451). The MW of this protein is 80 kDa, and this antibody specially recognises the 80 kDa protein.

## Notable Publications

Author	Pubmed ID	Journal	Application
Tamás Szaniszló	36114230	Sci Rep	WB, IF, CoIP
Marcus Karlstetter	24833722	Hum Mol Genet	IF
Ji Yun Song	29673930	Mol Ther	

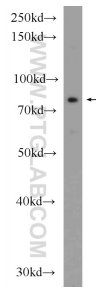
## Storage

**Storage:**  
Store at -20°C. Stable for one year after shipment.  
**Storage Buffer:**  
PBS with 0.02% sodium azide and 50% glycerol pH 7.3.  
Aliquoting is unnecessary for -20°C storage

For technical support and original validation data for this product please contact:  
T: 4006900926 E: Proteintech-CN@ptglab.com W: ptgcn.com

**This product is exclusively available under Proteintech Group brand and is not available to purchase from any other manufacturer.**

## Selected Validation Data



HeLa cells were subjected to SDS PAGE followed by western blot with 19333-1-AP (LCA5 Antibody) at dilution of 1:300 incubated at room temperature for 1.5 hours.