

For Research Use Only

CHCHD2 Polyclonal antibody

Catalog Number: 19424-1-AP

Featured Product

40 Publications



Basic Information

Catalog Number:

19424-1-AP

Size:

550 µg/ml

Source:

Rabbit

Isotype:

IgG

Immunogen Catalog Number:

AG13752

GenBank Accession Number:

BC003079

GeneID (NCBI):

51142

UNIPROT ID:

Q9Y6H1

Full Name:

coiled-coil-helix-coiled-coil-helix domain containing 2

Calculated MW:

151 aa, 16 kDa

Observed MW:

16-18 kDa

Purification Method:

Antigen affinity purification

Recommended Dilutions:

WB 1:500-1:2000

IP 0.5-4.0 µg for 1.0-3.0 mg of total protein lysate

IHC 1:50-1:500

IF/ICC 1:200-1:800

Applications

Tested Applications:

WB, IHC, IF/ICC, IP, ELISA

Cited Applications:

WB, IHC, IF, CoIP

Species Specificity:

human, mouse

Cited Species:

human, mouse, drosophila

Positive Controls:

WB: HT-1080 cells, HEK-293 cells, human adrenal gland tissue, HepG2 cells

IP: HepG2 cells,

IHC: human lung cancer tissue, mouse brain tissue

IF/ICC: HepG2 cells,

Note-IHC: suggested antigen retrieval with TE buffer pH 9.0; (*) Alternatively, antigen retrieval may be performed with citrate buffer pH 6.0

Background Information

CHCHD2 is a widely expressed 16.7-kDa mitochondrion-localized protein. CHCHD2 contains a C-terminal CHCH (coiled-coil helix coiled-coil helix) domain. Mutations in CHCHD2 gene have been reported in autosomal dominant Parkinson's disease (ADPD). CHCHD2 is a bi-organellar mediator of oxidative phosphorylation, playing crucial roles in regulating electron flow in the mitochondrial electron transport chain and acting as a nuclear transcription factor for a cytochrome c oxidase subunit (COX4l2) and itself in response to hypoxic stress. CHCHD2 also regulates cell migration and differentiation, mitochondrial cristae structure, and apoptosis (PMID: 33967741).

Notable Publications

Author	Pubmed ID	Journal	Application
Alec S T Smith	34660586	Front Cell Dev Biol	IHC
Maxime Feyeux	22678061	Hum Mol Genet	WB
Da-Yuan Chen	33140044	bioRxiv	WB

Storage

Storage:

Store at -20°C. Stable for one year after shipment.

Storage Buffer:

PBS with 0.02% sodium azide and 50% glycerol pH 7.3.

Aliquoting is unnecessary for -20°C storage

For technical support and original validation data for this product please contact:

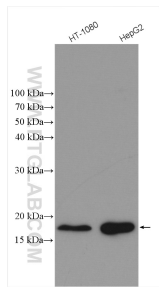
T: 4006900926

E: Proteintech-CN@ptglab.com

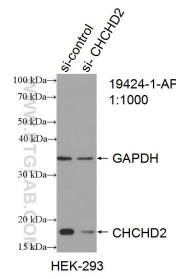
W: ptgcn.com

This product is exclusively available under Proteintech Group brand and is not available to purchase from any other manufacturer.

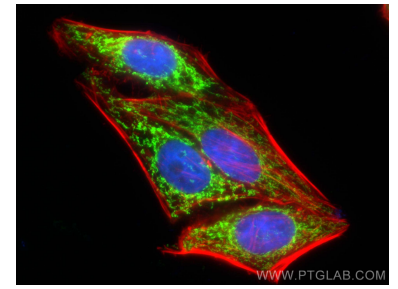
Selected Validation Data



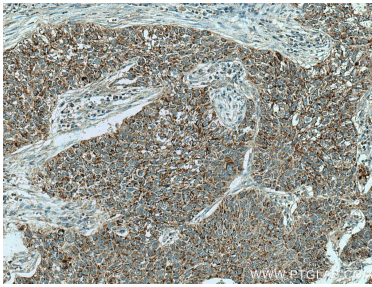
Various lysates were subjected to SDS PAGE followed by western blot with 19424-1-AP (CHCHD2 antibody) at dilution of 1:1000 incubated at room temperature for 1.5 hours.



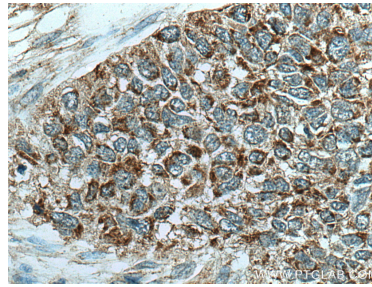
WB result of CHCHD2 antibody (19424-1-AP; 1:1000); incubated at room temperature for 1.5 hours) with sh-Control and sh-CHCHD2 transfected HEK-293 cells.



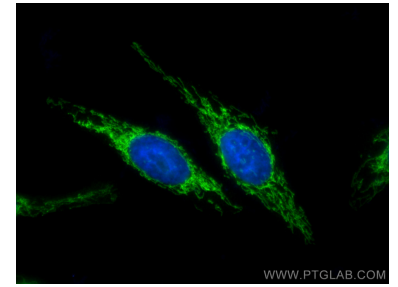
Immunofluorescent analysis of (4% PFA) fixed HepG2 cells using CHCHD2 antibody (19424-1-AP) at dilution of 1:200 and CoraLite@488-Conjugated Goat Anti-Rabbit IgG(H+L), CL594-phalloidin (red).



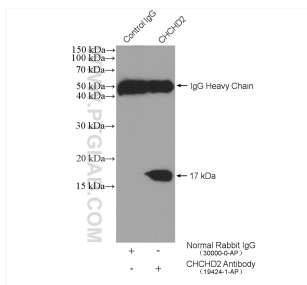
Immunohistochemical analysis of paraffin-embedded human lung cancer tissue slide using 19424-1-AP (CHCHD2 antibody) at dilution of 1:200 (under 10x lens). Heat mediated antigen retrieval with Tris-EDTA buffer (pH 9.0).



Immunohistochemical analysis of paraffin-embedded human lung cancer tissue slide using 19424-1-AP (CHCHD2 antibody) at dilution of 1:200 (under 40x lens). Heat mediated antigen retrieval with Tris-EDTA buffer (pH 9.0).



Immunofluorescent analysis of (4% PFA) fixed HepG2 cells using CHCHD2 antibody (19424-1-AP) at dilution of 1:400 and CoraLite@488-Conjugated Goat Anti-Rabbit IgG(H+L).



IP result of anti-CHCHD2 (IP:19424-1-AP, 4ug; Detection:19424-1-AP 1:1000) with HepG2 cells lysate 2520 ug.