

For Research Use Only

ALDH3B1 Polyclonal antibody

Catalog Number: 19446-1-AP

Featured Product

4 Publications



Basic Information

Catalog Number:

19446-1-AP

Size:

400 µg/ml

Source:

Rabbit

Isotype:

IgG

Immunogen Catalog Number:

AG7025

GenBank Accession Number:

BC002553

GeneID (NCBI):

221

UNIPROT ID:

P43353

Full Name:

aldehyde dehydrogenase 3 family, member B1

Calculated MW:

52 kDa

Observed MW:

55 kDa

Purification Method:

Antigen affinity purification

Recommended Dilutions:

WB 1:200-1:1000

IHC 1:20-1:200

Applications

Tested Applications:

IHC, WB, ELISA

Cited Applications:

WB, IHC

Species Specificity:

human, mouse

Cited Species:

human, mouse

Note-IHC: suggested antigen retrieval with TE buffer pH 9.0; (*) Alternatively, antigen retrieval may be performed with citrate buffer pH 6.0

Positive Controls:

WB : RAW 264.7 cells,

IHC : human lung cancer tissue, human renal cell carcinoma tissue

Background Information

ALDH3B1 (Aldehyde dehydrogenase family 3 member B1) is also named as ALDH7 and belongs to the aldehyde dehydrogenase family. It catalyzes fatty and aromatic aldehydes. ALDH3B1 may play a role in the detoxification of aldehydes produced during oxidative stress. This protein has 2 isoforms produced by alternative splicing.

Notable Publications

Author	Pubmed ID	Journal	Application
Carlos J Diaz Osterman	31478830	Elife	WB
Zhenjie Wu	36327089	Cell Stress Chaperones	WB
Zeyu Wang	35116021	Front Immunol	WB

Storage

Storage:

Store at -20°C. Stable for one year after shipment.

Storage Buffer:

PBS with 0.02% sodium azide and 50% glycerol pH 7.3.

Aliquoting is unnecessary for -20°C storage

For technical support and original validation data for this product please contact:

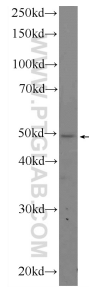
T: 4006900926

E: Proteintech-CN@ptglab.com

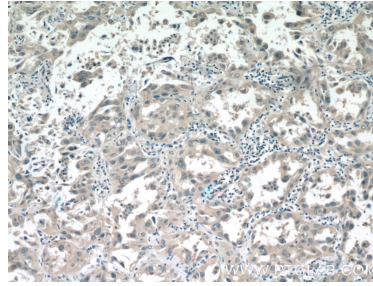
W: ptgcn.com

This product is exclusively available under Proteintech Group brand and is not available to purchase from any other manufacturer.

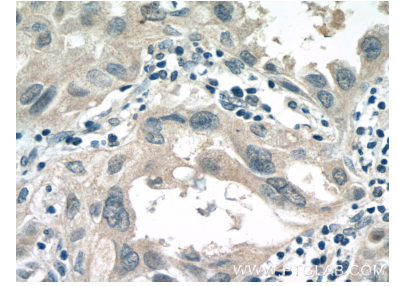
Selected Validation Data



RAW 264.7 cells were subjected to SDS PAGE followed by western blot with 19446-1-AP (ALDH3B1 Antibody) at dilution of 1:300 incubated at room temperature for 1.5 hours.



Immunohistochemical analysis of paraffin-embedded human lung cancer tissue slide using 19446-1-AP (ALDH3B1 Antibody) at dilution of 1:50 (under 10x lens).



Immunohistochemical analysis of paraffin-embedded human lung cancer tissue slide using 19446-1-AP (ALDH3B1 Antibody) at dilution of 1:50 (under 40x lens).