

For Research Use Only

LRMP Polyclonal antibody, PBS Only

Catalog Number: 19498-1-PBS



Basic Information

Catalog Number:

19498-1-PBS

Size:

1 mg/ml

Source:

Rabbit

Isotype:

IgG

GenBank Accession Number:

NM_006152

GeneID (NCBI):

4033

UNIPROT ID:

Q12912

Full Name:

Lymphoid-restricted membrane protein

Calculated MW:

62 kDa

Observed MW:

70 kDa

Purification Method:

Antigen affinity purification

Applications

Tested Applications:

WB, IHC, IF/ICC, Indirect ELISA

Species Specificity:

human

Background Information

LRMP, also named as JAW1, is a lymphoid restricted integral membrane protein that is localised to the cytoplasmic face of the endoplasmic reticulum.

Storage

Storage:

Store at -80°C.

The product is shipped with ice packs. Upon receipt, store it immediately at -80°C

Storage Buffer:

PBS Only

For technical support and original validation data for this product please contact:

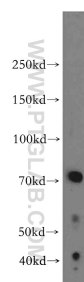
T: 4006900926

E: Proteintech-CN@ptglab.com

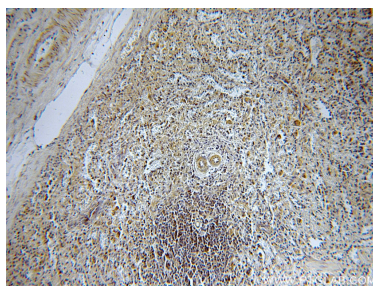
W: ptgcn.com

This product is exclusively available under Proteintech Group brand and is not available to purchase from any other manufacturer.

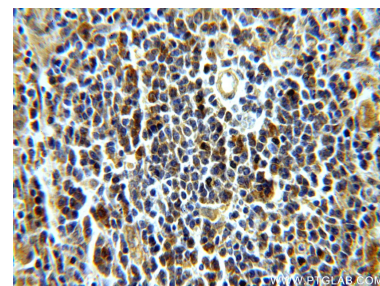
Selected Validation Data



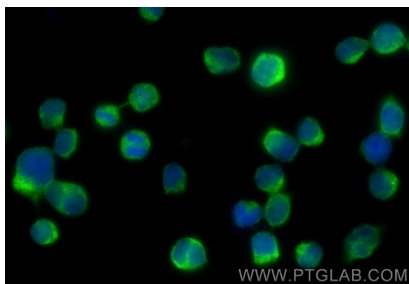
Raji cells were subjected to SDS PAGE followed by western blot with 19498-1-AP (LRMP antibody) at dilution of 1:500 incubated at room temperature for 1.5 hours. This data was developed using the same antibody clone with 19498-1-PBS in a different storage buffer formulation.



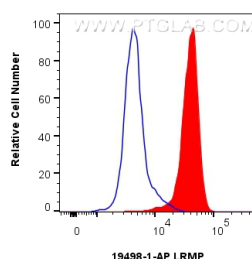
Immunohistochemical analysis of paraffin-embedded human spleen using 19498-1-AP (LRMP antibody) at dilution of 1:100 (under 10x lens). This data was developed using the same antibody clone with 19498-1-PBS in a different storage buffer formulation.



Immunohistochemical analysis of paraffin-embedded human spleen using 19498-1-AP (LRMP antibody) at dilution of 1:100 (under 40x lens). This data was developed using the same antibody clone with 19498-1-PBS in a different storage buffer formulation.



Immunofluorescent analysis of (4% PFA) fixed Jurkat cells using LRMP antibody (19498-1-AP) at dilution of 1:200 and Multi-rAb Coralite® Plus 488-Goat Anti-Rabbit Recombinant Secondary Antibody (H+L) (RGAR002). This data was developed using the same antibody clone with 19498-1-PBS in a different storage buffer formulation.



1×10^6 Jurkat cells were intracellularly stained with 0.4 ug LRMP Polyclonal antibody (19498-1-AP) and Coralite®488-Conjugated Goat Anti-Rabbit IgG(H+L) (SA00013-2)(red), or 0.4 ug Rabbit IgG control Rabbit PolyAb (30000-0-AP) (blue). Cells were fixed with 4% PFA and permeabilized with Flow Cytometry Perm Buffer (PF00011-C). This data was developed using the same antibody clone with 19498-1-PBS in a different storage buffer formulation.