

For Research Use Only

# SENP5-Specific Polyclonal antibody

Catalog Number:19529-1-AP

Featured Product

11 Publications



## Basic Information

**Catalog Number:**

19529-1-AP

**Size:**

1000 ug/ml

**Source:**

Rabbit

**Isotype:**

IgG

**GenBank Accession Number:**

NM\_152699

**GeneID (NCBI):**

205564

**UNIPROT ID:**

Q96H10

**Full Name:**

SUMO1/sentrin specific peptidase 5

**Calculated MW:**

87 kDa

**Observed MW:**

97 kDa

**Purification Method:**

Antigen affinity purification

**Recommended Dilutions:**

IP 0.5-4.0 ug for 1.0-3.0 mg of total protein lysate  
IHC 1:200-1:600

## Applications

**Tested Applications:**

IHC, IP, ELISA

**Cited Applications:**

WB, IHC, IF, CoIP

**Species Specificity:**

human, mouse, rat

**Cited Species:**

human, mouse, rat

**Note-IHC: suggested antigen retrieval with TE buffer pH 9.0; (\*) Alternatively, antigen retrieval may be performed with citrate buffer pH 6.0**

**Positive Controls:**

IP: HeLa cells,

IHC: human cervical cancer tissue, human placenta tissue

## Background Information

SENP5, also named as FKSG45, belongs to the peptidase C48 family. SENP5 is a protease that catalyzes two essential functions in the SUMO pathway: processing of full-length SUMO3 to its mature form and deconjugation of SUMO2 and SUMO3 from targeted proteins. SENP5 has weak proteolytic activity against full-length SUMO1 or SUMO1 conjugates. It is required for cell division. The antibody is specific to SENP5.

## Notable Publications

Author	Pubmed ID	Journal	Application
Mamta Amrute-Nayak	36417853	Cell Rep	WB
Bin Yu	34060616	J Cell Sci	WB
Bin Yu	34313310	J Cell Sci	WB

## Storage

**Storage:**

Store at -20°C. Stable for one year after shipment.

**Storage Buffer:**

PBS with 0.02% sodium azide and 50% glycerol pH 7.3.

Aliquoting is unnecessary for -20°C storage

For technical support and original validation data for this product please contact:

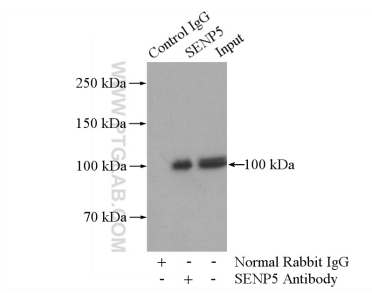
T: 4006900926

E: Proteintech-CN@ptglab.com

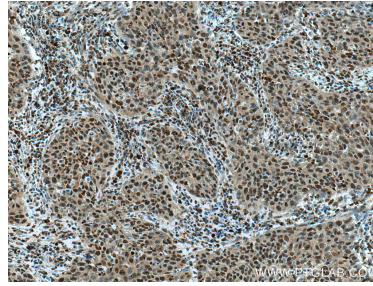
W: ptgcn.com

This product is exclusively available under Proteintech Group brand and is not available to purchase from any other manufacturer.

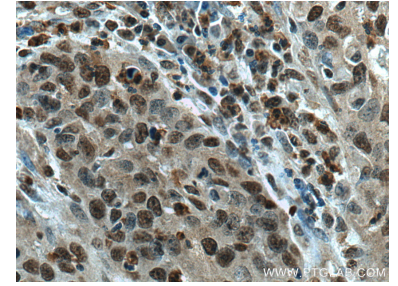
## Selected Validation Data



IP result of anti-SEN5-Specific (IP:19529-1-AP, 4ug; Detection:19529-1-AP 1:300) with HeLa cells lysate 520ug.



Immunohistochemical analysis of paraffin-embedded human cervical cancer tissue slide using 19529-1-AP (SENP5-Specific antibody) at dilution of 1:200 (under 10x lens). Heat mediated antigen retrieval with Tris-EDTA buffer (pH 9.0).



Immunohistochemical analysis of paraffin-embedded human cervical cancer tissue slide using 19529-1-AP (SENP5-Specific antibody) at dilution of 1:200 (under 40x lens). Heat mediated antigen retrieval with Tris-EDTA buffer (pH 9.0).