

For Research Use Only

CHKA-Specific Polyclonal antibody

Catalog Number: 19537-1-AP



Basic Information

Catalog Number: 19537-1-AP	GenBank Accession Number: NM_001277	Purification Method: Antigen affinity purification
Size: 450 µg/ml	GeneID (NCBI): 1119	Recommended Dilutions: WB 1:200-1:1000 IHC 1:20-1:200 IF/ICC 1:10-1:100
Source: Rabbit	UNIPROT ID: P35790	
Isotype: IgG	Full Name: choline kinase alpha	
	Calculated MW: 52 kDa	
	Observed MW: 50 kDa	

Applications

Tested Applications:
IF/ICC, IHC, WB, ELISA

Species Specificity:
human, mouse, rat

Note-IHC: suggested antigen retrieval with TE buffer pH 9.0; (*) Alternatively, antigen retrieval may be performed with citrate buffer pH 6.0

Positive Controls:

WB : HepG2 cells, COLO 320 cells, human testis tissue, mouse colon tissue, mouse testis tissue, Raji cells

IHC : human breast cancer tissue, human liver tissue

IF/ICC : HepG2 cells,

Background Information

Choline kinase alpha, also named as CHK, CKI and CK, belongs to the choline/ethanolamine kinase family. CHKa may have a regulatory role in phosphatidylcholine synthesis. CHKA catalyze the reaction: ATP + choline = ADP + O-phosphocholine. The human enzyme resembled the rat liver enzyme over the entire sequence. It also resembled the yeast enzyme in the carboxy-terminal region, but not in the amino-terminal region(PMID:1618328). And it expresses in human brain tissue but not in human skeletal muscle(PMID:21665002). It has 2 isoforms produced by alternative splicing. The antibody is specific to CHKA.

Storage

Storage:
Store at -20°C. Stable for one year after shipment.
Storage Buffer:
PBS with 0.02% sodium azide and 50% glycerol pH 7.3.
Aliquoting is unnecessary for -20°C storage

For technical support and original validation data for this product please contact:

T: 4006900926

E: Proteintech-CN@ptglab.com

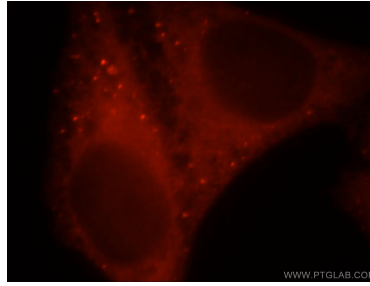
W: ptgcn.com

This product is exclusively available under Proteintech Group brand and is not available to purchase from any other manufacturer.

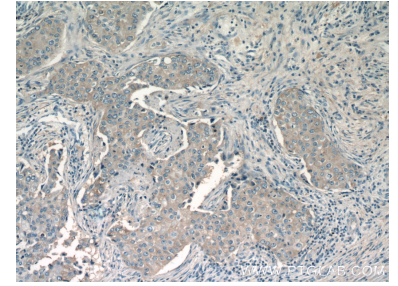
Selected Validation Data



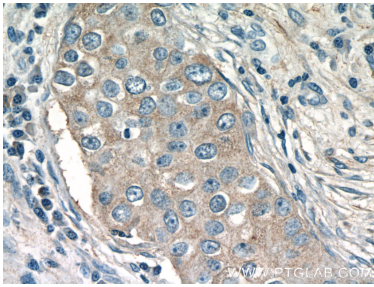
HepG2 cells were subjected to SDS PAGE followed by western blot with 19537-1-AP (CHKA-Specific antibody) at dilution of 1:300 incubated at room temperature for 1.5 hours.



Immunofluorescent analysis of HepG2 cells, using CHKA antibody 19537-1-AP at 1:25 dilution and Rhodamine-labeled goat anti-rabbit IgG (red).



Immunohistochemical analysis of paraffin-embedded human breast cancer tissue slide using 19537-1-AP (CHKA-Specific Antibody) at dilution of 1:50 (under 10x lens).



Immunohistochemical analysis of paraffin-embedded human breast cancer tissue slide using 19537-1-AP (CHKA-Specific Antibody) at dilution of 1:50 (under 40x lens).