

For Research Use Only

LRWD1 Polyclonal antibody

Catalog Number: 19546-1-AP **1 Publications**



Basic Information

Catalog Number:

19546-1-AP

Size:

900 µg/ml

Source:

Rabbit

Isotype:

IgG

GenBank Accession Number:

NM_152892

GeneID (NCBI):

222229

UNIPROT ID:

Q9UFC0

Full Name:

leucine-rich repeats and WD repeat domain containing 1

Calculated MW:

71 kDa

Observed MW:

85 kDa

Purification Method:

Antigen affinity purification

Recommended Dilutions:

WB 1:5000-1:50000

IP 0.5-4.0 µg for 1.0-3.0 mg of total protein lysate

Applications

Tested Applications:

IP, WB, ELISA

Cited Applications:

WB

Species Specificity:

human, mouse, rat

Cited Species:

human

Positive Controls:

WB : mouse testis tissue, rat testis tissue

IP : mouse testis tissue,

Background Information

LRWD1 contains 3 LRR (Leucine-rich) repeats and 5 WD repeats. LRWD1 is phosphorylated upon DNA damage by ATM or ATR. The antibody recognize the N-term of LRWD1.

Notable Publications

Author	Pubmed ID	Journal	Application
Jason M Scovell	33913480	Development	WB

Storage

Storage:

Store at -20°C. Stable for one year after shipment.

Storage Buffer:

PBS with 0.02% sodium azide and 50% glycerol pH 7.3.

Aliquoting is unnecessary for -20°C storage

For technical support and original validation data for this product please contact:

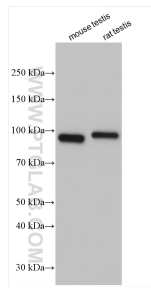
T: 4006900926

E: Proteintech-CN@ptglab.com

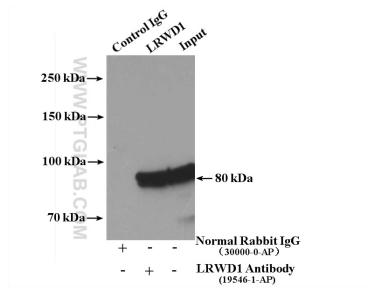
W: ptgcn.com

This product is exclusively available under Proteintech Group brand and is not available to purchase from any other manufacturer.

Selected Validation Data



Various lysates were subjected to SDS PAGE followed by western blot with 19546-1-AP (LRWD1 antibody) at dilution of 1:10000 incubated at room temperature for 1.5 hours.



IP result of anti-LRWD1 (IP:19546-1-AP, 4ug; Detection:19546-1-AP 1:1000) with mouse testis tissue lysate 4000ug.