

For Research Use Only

Phospho-Smtnl1 (Ser301) Polyclonal antibody



Catalog Number: 19560-1-AP

1 Publications

Basic Information

Catalog Number:

19560-1-AP

Size:

629 µg/ml

Source:

Rabbit

Isotype:

IgG

GenBank Accession Number:

NM_024230

GeneID (NCBI):

68678

UNIPROT ID:

Q99LM3

Full Name:

smoothelin-like 1

Calculated MW:

49 kDa

Observed MW:

50 kDa

Purification Method:

Antigen affinity purification

Recommended Dilutions:

WB 1:500-1:1000

Applications

Tested Applications:

WB, ELISA

Cited Applications:

WB

Species Specificity:

mouse

Cited Species:

mouse

Positive Controls:

WB : mouse bladder tissue,

Background Information

Smtnl1 belongs to the smoothelin family. The antibody recognize Ser(301) phospho of Smtnl1.

Notable Publications

Author	Pubmed ID	Journal	Application
Beata Lontay	26048986	J Biol Chem	WB

Storage

Storage:

Store at -20°C. Stable for one year after shipment.

Storage Buffer:

PBS with 0.02% sodium azide and 50% glycerol pH 7.3.

Aliquoting is unnecessary for -20°C storage

For technical support and original validation data for this product please contact:

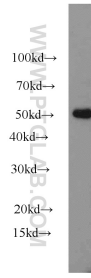
T: 4006900926

E: Proteintech-CN@ptglab.com

W: ptgcn.com

This product is exclusively available under Proteintech Group brand and is not available to purchase from any other manufacturer.

Selected Validation Data



mouse bladder tissue were subjected to SDS PAGE followed by western blot with 19560-1-AP (Smtnl1-phospho-S301 antibody) at dilution of 1:500 incubated at room temperature for 1.5 hours.