

For Research Use Only

# PGPEP1 Polyclonal antibody

Catalog Number: 19566-1-AP



## Basic Information

<b>Catalog Number:</b> 19566-1-AP	<b>GenBank Accession Number:</b> NM_017712	<b>Purification Method:</b> Antigen affinity purification
<b>Size:</b> 450 µg/ml	<b>GeneID (NCBI):</b> 54858	<b>Recommended Dilutions:</b> WB 1:500-1:1000 IF/ICC 1:10-1:100
<b>Source:</b> Rabbit	<b>UNIPROT ID:</b> Q9NXJ5	
<b>Isotype:</b> IgG	<b>Full Name:</b> pyroglutamyl-peptidase I	
	<b>Calculated MW:</b> 23 kDa	
	<b>Observed MW:</b> 20-23 kDa	

## Applications

<b>Tested Applications:</b> IF/ICC, WB, ELISA	<b>Positive Controls:</b> WB : human brain tissue, IF/ICC : HepG2 cells,
<b>Species Specificity:</b> human, mouse	

## Background Information

PGPEP1, also named as PGPI, belongs to the peptidase C15 family. PGPEP1 removes 5-oxoproline from various penultimate amino acid residues except L-proline.

## Storage

**Storage:**  
Store at -20°C. Stable for one year after shipment.  
**Storage Buffer:**  
PBS with 0.02% sodium azide and 50% glycerol pH 7.3.  
Aliquoting is unnecessary for -20°C storage

For technical support and original validation data for this product please contact:

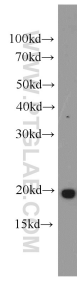
T: 4006900926

E: [Proteintech-CN@ptglab.com](mailto:Proteintech-CN@ptglab.com)

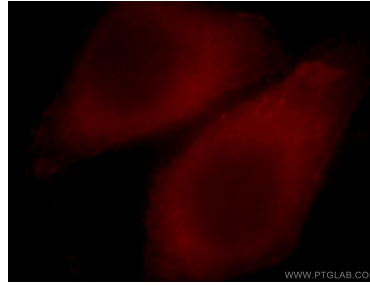
W: [ptgcn.com](http://ptgcn.com)

This product is exclusively available under Proteintech Group brand and is not available to purchase from any other manufacturer.

## Selected Validation Data



human brain tissue were subjected to SDS PAGE followed by western blot with 19566-1-AP (PGPEP1 antibody) at dilution of 1:600 incubated at room temperature for 1.5 hours.



Immunofluorescent analysis of HepG2 cells, using PGPEP1 antibody 19566-1-AP at 1:25 dilution and Rhodamine-labeled goat anti-rabbit IgG (red).