

For Research Use Only

MYH10-Specific Polyclonal antibody

Catalog Number:19673-1-AP

Featured Product

12 Publications



Basic Information

Catalog Number:

19673-1-AP

Concentration:

500 µg/ml

Source:

Rabbit

Isotype:

IgG

GenBank Accession Number:

NM_005964

GeneID (NCBI):

4628

UNIPROT ID:

P35580

Full Name:

myosin, heavy chain 10, non-muscle

Calculated MW:

231 kDa

Observed MW:

229 kDa

Purification Method:

Antigen affinity purification

Recommended Dilutions:

WB 1:20000-1:100000

IP 0.5-4.0 µg for 1.0-3.0 mg of total protein lysate

IHC 1:50-1:500

IF/ICC 1:10-1:100

Applications

Tested Applications:

WB, IHC, IF/ICC, IP, ELISA

Cited Applications:

WB, IHC, IF, IP, CoIP, ELISA

Species Specificity:

human, mouse, rat

Cited Species:

human, mouse, rat

Note-IHC: suggested antigen retrieval with TE buffer pH 9.0; (*) Alternatively, antigen retrieval may be performed with citrate buffer pH 6.0

Positive Controls:

WB: HEK-293T cells, HEK-293 cells, HeLa cells, NIH/3T3 cells, mouse brain tissue, rat brain tissue

IP: mouse brain tissue,

IHC: human cerebellum tissue, human brain tissue

IF/ICC: HepG2 cells,

Background Information

MYH10 is cellular myosin that appears to play a role in cytokinesis, cell shape, and specialized functions such as secretion and capping. The antibody is specific to the C-term of MYH10.

Notable Publications

Author	Pubmed ID	Journal	Application
Pengzhen Cheng	35310379	Bioact Mater	WB,CoIP
Yushi Katsuyama	36243587	J Dermatol Sci	WB
Hongyuan Xu	36437609	J Neurochem	WB

Storage

Storage:

Store at -20°C. Stable for one year after shipment.

Storage Buffer:

PBS with 0.02% sodium azide and 50% glycerol pH 7.3.

Aliquoting is unnecessary for -20°C storage

For technical support and original validation data for this product please contact:

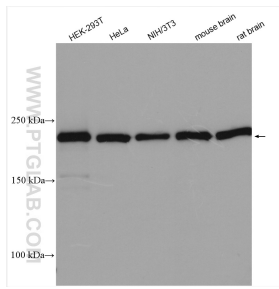
T: 4006900926

E: Proteintech-CN@ptglab.com

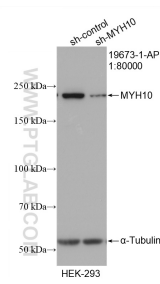
W: ptgcn.com

This product is exclusively available under Proteintech Group brand and is not available to purchase from any other manufacturer.

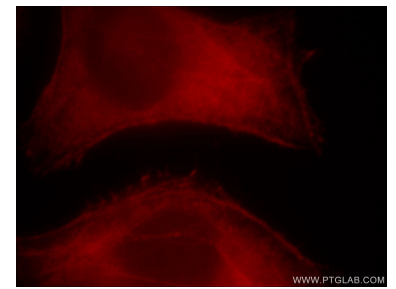
Selected Validation Data



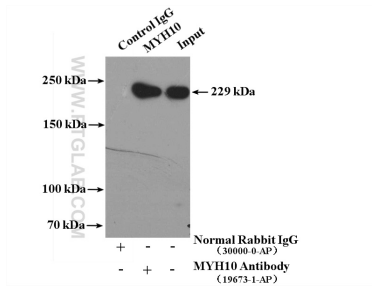
Various lysates were subjected to SDS PAGE followed by western blot with 19673-1-AP (MYH10-Specific antibody) at dilution of 1:50000 incubated at room temperature for 1.5 hours.



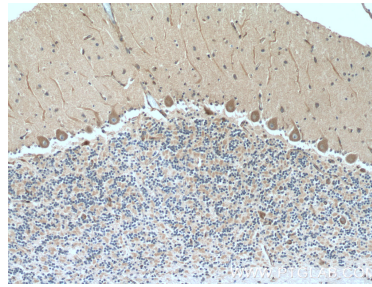
WB result of MYH10-Specific antibody (19673-1-AP; 1:80000; incubated at room temperature for 1.5 hours) with sh-Control and sh-MYH10-Specific transfected HEK-293 cells.



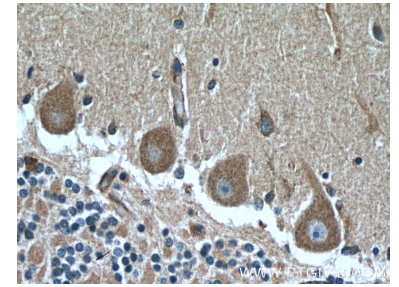
Immunofluorescent analysis of HepG2 cells, using MYH10 antibody 19673-1-AP at 1:25 dilution and Rhodamine-labeled goat anti-rabbit IgG (red).



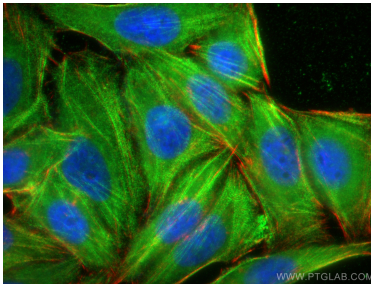
IP result of anti-MYH10-Specific (IP:19673-1-AP, 4ug; Detection:19673-1-AP 1:1000) with mouse brain tissue lysate 4000ug.



Immunohistochemical analysis of paraffin-embedded human cerebellum tissue slide using 19673-1-AP (MYH10-Specific Antibody) at dilution of 1:200 (under 10x lens).



Immunohistochemical analysis of paraffin-embedded human cerebellum tissue slide using 19673-1-AP (MYH10-Specific Antibody) at dilution of 1:200 (under 40x lens).



Immunofluorescent analysis of (-20°C Ethanol) fixed HepG2 cells using MYH10-Specific antibody (19673-1-AP) at dilution of 1:400 and CoraLite@488-Conjugated Goat Anti-Rabbit IgG(H+L), CL594-Phalloidin (red).