

For Research Use Only

# RRM1-Specific Polyclonal antibody

Catalog Number: 19686-1-AP



## Basic Information

Catalog Number:

19686-1-AP

Size:

260 µg/ml

Source:

Rabbit

Isotype:

IgG

GenBank Accession Number:

NM\_001033

GeneID (NCBI):

6240

UNIPROT ID:

P23921

Full Name:

ribonucleotide reductase M1

Calculated MW:

90 kDa

Observed MW:

90 kDa

Purification Method:

Antigen affinity purification

Recommended Dilutions:

WB 1:200-1:1000

IF 1:10-1:100

## Applications

Tested Applications:

IF/ICC, WB, ELISA

Species Specificity:

human, mouse, rat

Positive Controls:

WB : A549 cells, HEK-293 cells, HeLa cells

IF : HepG2 cells,

## Background Information

RRM1, also named as RR1, belongs to the ribonucleoside diphosphate reductase large chain family. RRM1 provides the precursors necessary for DNA synthesis. RRM1 catalyzes the biosynthesis of deoxyribonucleotides from the corresponding ribonucleotides. RRM1 is a key enzyme in DNA synthesis: low level expression of RRM1 is associated with poor survival. RRM1 is a prognostic marker of NSCLC. The antibody is specific to RRM1.

## Storage

Storage:

Store at -20°C. Stable for one year after shipment.

Storage Buffer:

PBS with 0.02% sodium azide and 50% glycerol pH 7.3.

Aliquoting is unnecessary for -20°C storage

For technical support and original validation data for this product please contact:

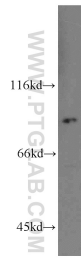
T: 4006900926

E: [Proteintech-CN@ptglab.com](mailto:Proteintech-CN@ptglab.com)

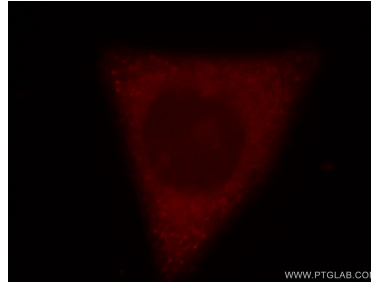
W: [ptgcn.com](http://ptgcn.com)

This product is exclusively available under Proteintech Group brand and is not available to purchase from any other manufacturer.

## Selected Validation Data



A549 cells were subjected to SDS PAGE followed by western blot with 19686-1-AP (RRM1-Specific antibody) at dilution of 1:100 incubated at room temperature for 1.5 hours.



Immunofluorescent analysis of HepG2 cells, using RRM1 antibody 19686-1-AP at 1:25 dilution and Rhodamine-labeled goat anti-rabbit IgG (red).