

For Research Use Only

ATG16L1 Polyclonal antibody

Catalog Number: 19812-1-AP **16 Publications**



Basic Information

Catalog Number:

19812-1-AP

Size:

350 µg/ml

Source:

Rabbit

Isotype:

IgG

Immunogen Catalog Number:

AG13844

GenBank Accession Number:

BC000061

GeneID (NCBI):

55054

UNIPROT ID:

Q676U5

Full Name:

ATG16 autophagy related 16-like 1 (S. cerevisiae)

Calculated MW:

607 aa, 68 kDa

Observed MW:

63-71 kDa

Purification Method:

Antigen affinity purification

Recommended Dilutions:

WB 1:200-1:1000

IP 0.5-4.0 µg for 1.0-3.0 mg of total protein lysate

Applications

Tested Applications:

IP, WB, ELISA

Cited Applications:

CoIP, IF, IHC, WB

Species Specificity:

human, mouse

Cited Species:

human, rat, mouse, pig

Positive Controls:

WB: mouse spleen tissue, MCF-7 cells, Jurkat cells, HEK-293T cells

IP: MCF-7 cells,

Background Information

Human ATG16L1 is a 607 amino acid protein (~68 kDa) comprising three major domains: the N-terminal ATG5 binding domain (ATG5 - BD), the central coiled-coil domain (CCD) and a predicted C-terminal WD40-domain. ATG16L1 α and β (Atg16L1 α , 63 kDa; and Atg16L1 β , 71 kDa) are the major isoforms expressed in intestinal epithelium and macrophages, and all isoforms encode exon 9, which contains Thr 300. Atg16L1 mediates the cellular degradative process of autophagy and is considered a critical regulator of inflammation based on its genetic association with inflammatory bowel disease. ATG16L1 has been implicated in Crohn's disease. (PMID: 24553140, PMID: 22740627, PMID: 28685931)

Notable Publications

Author	Pubmed ID	Journal	Application
Yunjing Zou	36362066	Int J Mol Sci	WB
Shuang-Zhou Peng	34645818	Nat Commun	IF
Yaling Li	33210714	Acta Biochim Biophys Sin (Shanghai)	WB

Storage

Storage:

Store at -20°C. Stable for one year after shipment.

Storage Buffer:

PBS with 0.02% sodium azide and 50% glycerol pH 7.3.

Aliquoting is unnecessary for -20°C storage

For technical support and original validation data for this product please contact:

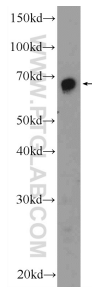
T: 4006900926

E: Proteintech-CN@ptglab.com

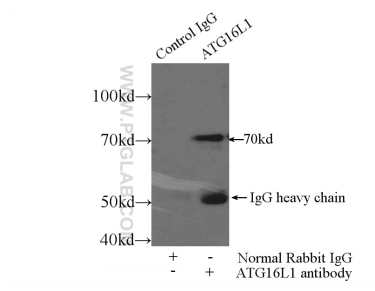
W: ptgcn.com

This product is exclusively available under Proteintech Group brand and is not available to purchase from any other manufacturer.

Selected Validation Data



mouse spleen tissue were subjected to SDS PAGE followed by western blot with 19812-1-AP (ATG16L1 Antibody) at dilution of 1:300 incubated at room temperature for 1.5 hours.



IP result of anti-ATG16L1 (IP:19812-1-AP, 4ug; Detection:19812-1-AP 1:300) with MCF-7 cells lysate 2000ug.