

For Research Use Only

# GTL3 Polyclonal antibody

Catalog Number: 19905-1-AP



## Basic Information

Catalog Number:

19905-1-AP

Size:

500 µg/ml

Source:

Rabbit

Isotype:

IgG

Immunogen Catalog Number:

AG13881

GenBank Accession Number:

BC005152

GeneID (NCBI):

29105

UNIPROT ID:

Q9Y6A4

Full Name:

chromosome 16 open reading frame

80

Calculated MW:

193 aa, 23 kDa

Observed MW:

22 kDa

Purification Method:

Antigen affinity purification

Recommended Dilutions:

WB 1:500-1:1000

## Applications

Tested Applications:

WB, ELISA

Species Specificity:

human, mouse

Positive Controls:

WB : HeLa cells, HepG2 cells, mouse testis tissue

## Background Information

GTL3 (Cilia- and flagella-associated protein 20, also named CFAP20) may play a role in axonemal structure organization and motility.

## Storage

Storage:

Store at -20°C. Stable for one year after shipment.

Storage Buffer:

PBS with 0.02% sodium azide and 50% glycerol pH 7.3.

Aliquoting is unnecessary for -20°C storage

For technical support and original validation data for this product please contact:

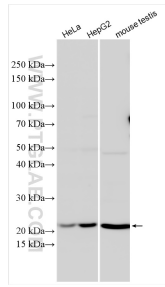
T: 4006900926

E: [Proteintech-CN@ptglab.com](mailto:Proteintech-CN@ptglab.com)

W: [ptgcn.com](http://ptgcn.com)

This product is exclusively available under Proteintech Group brand and is not available to purchase from any other manufacturer.

## Selected Validation Data



Various lysates were subjected to SDS PAGE followed by western blot with 19905-1-AP (GTL3 antibody) at dilution of 1:600 incubated at room temperature for 1.5 hours.