

For Research Use Only

PPDPF Polyclonal antibody

Catalog Number: 19912-1-AP **6 Publications**



Basic Information

Catalog Number: 19912-1-AP	GenBank Accession Number: BC002531	Purification Method: Antigen affinity purification
Size: 450 ug/ml	GeneID (NCBI): 79144	Recommended Dilutions: WB 1:500-1:1000 IHC 1:50-1:500 IF/ICC 1:200-1:800
Source: Rabbit	UNIPROT ID: Q9H3Y8	
Isotype: IgG	Full Name: chromosome 20 open reading frame 149	
Immunogen Catalog Number: AG13740	Calculated MW: 114 aa, 12 kDa	
	Observed MW: 10-12 kDa	

Applications

Tested Applications: WB, IHC, IF/ICC, ELISA	Positive Controls: WB : MCF-7 cells, mouse pancreas tissue IHC : human colon cancer tissue, human pancreas tissue IF/ICC : U2OS cells,
Cited Applications: WB, IHC, IF	
Species Specificity: human, mouse	
Cited Species: human, mouse	

Note-IHC: suggested antigen retrieval with TE buffer pH 9.0; (*) Alternatively, antigen retrieval may be performed with citrate buffer pH 6.0

Background Information

Pancreatic progenitor cell differentiation and proliferation factor (PPDPF), also known as C20orf149 and EXPDF, belongs to the PPDPF family. PPDPF is a key regulator for the development of exocrine pancreas. PPDPF is highly expressed in various cancers, including HCC, colorectal cancer, prostate cancer, etc (PMID: 34031390, 34975328, 37027301). PPDPF consists of 114 amino acids and the molecular weight is 12 kDa.

Notable Publications

Author	Pubmed ID	Journal	Application
Marcel Morgenstern	34800366	Cell Metab	
Yangjiong Xiao	34041032	Front Oncol	WB
Mu Yun	34975328	Int J Biol Sci	WB

Storage

Storage:
Store at -20°C. Stable for one year after shipment.
Storage Buffer:
PBS with 0.02% sodium azide and 50% glycerol pH 7.3.
Aliquoting is unnecessary for -20°C storage

For technical support and original validation data for this product please contact:

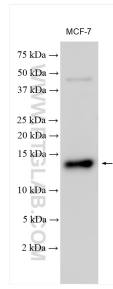
T: 4006900926

E: Proteintech-CN@ptglab.com

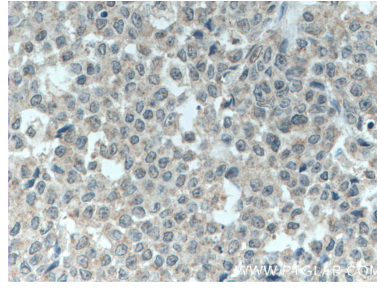
W: ptgcn.com

This product is exclusively available under Proteintech Group brand and is not available to purchase from any other manufacturer.

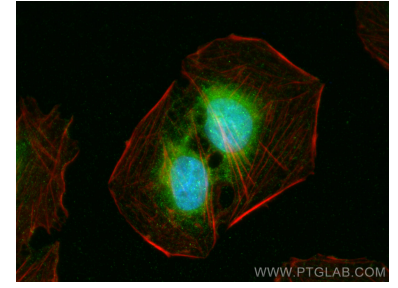
Selected Validation Data



Various lysates were subjected to SDS PAGE followed by western blot with 19912-1-AP (PPDPF antibody) at dilution of 1:500 incubated at room temperature for 1.5 hours.



Immunohistochemical analysis of paraffin-embedded human colon cancer tissue slide using 19912-1-AP (C20orf149 antibody) at dilution of 1:200 (under 40x lens. Heat mediated antigen retrieval with Tris-EDTA buffer (pH 9.0).



Immunofluorescent analysis of (4% PFA) fixed U2OS cells using PPDPF antibody (19912-1-AP) at dilution of 1:400 and CoraLite@488-Conjugated AffiniPure Goat Anti-Rabbit IgG(H+L), CL594-Phalloidin (red).