

For Research Use Only

# GAC-specific Polyclonal antibody, PBS Only

Catalog Number: 19958-1-PBS



## Basic Information

**Catalog Number:**

19958-1-PBS

**Size:**

1 mg/ml

**Source:**

Rabbit

**Isotype:**

IgG

**GenBank Accession Number:**

AF158555

**GeneID (NCBI):**

2744

**UNIPROT ID:**

O94925

**Full Name:**

glutaminase

**Calculated MW:**

65 kDa

**Observed MW:**

58 kDa

**Purification Method:**

Antigen affinity purification

## Applications

**Tested Applications:**

WB, IHC, IF/ICC, IP, Indirect ELISA

**Species Specificity:**

human, mouse

## Background Information

Glutaminase C (GAC), a splicing variant of the kidney-type glutaminase (KGA) gene, is a vital mitochondrial enzyme protein that catalyzes glutamine to glutamate. GAC is the only isoform present in the mitochondria (PMID:22228304). In a normal state, immunodecoration with antibodies directed against GAC identified an abundant complex of 232 kDa as a tetrameric form of GAC, the DPAA can directly destructed the native tetrameric GAC complex to accumulate the unassembled one (50-90 kDa). (PMID:22493432). This antibody is specific to GAC isoform. It has no cross reaction to KGA.

## Storage

**Storage:**

Store at -80°C.

**The product is shipped with ice packs. Upon receipt, store it immediately at -80°C**

**Storage Buffer:**

PBS Only

For technical support and original validation data for this product please contact:

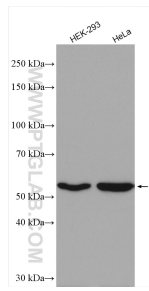
T: 4006900926

E: Proteintech-CN@ptglab.com

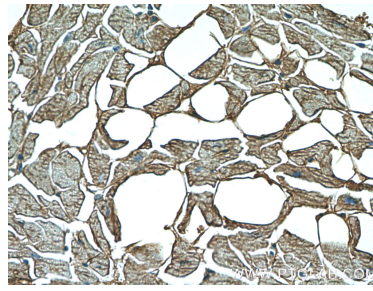
W: ptgcn.com

**This product is exclusively available under Proteintech Group brand and is not available to purchase from any other manufacturer.**

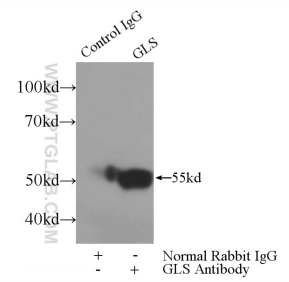
## Selected Validation Data



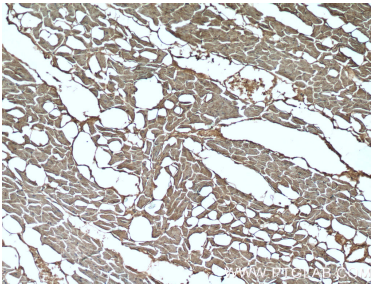
Various lysates were subjected to SDS PAGE followed by western blot with 19958-1-AP (GAC-specific antibody) at dilution of 1:1000 incubated at room temperature for 1.5 hours. This data was developed using the same antibody clone with 19958-1-PBS in a different storage buffer formulation.



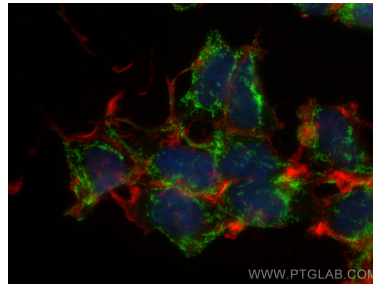
Immunohistochemical analysis of paraffin-embedded human heart tissue slide using 19958-1-AP (GAC-specific Antibody) at dilution of 1:200 (under 40x lens). This data was developed using the same antibody clone with 19958-1-PBS in a different storage buffer formulation.



IP result of anti-GAC-specific (IP:19958-1-AP, 3ug; Detection:19958-1-AP 1:500) with mouse kidney tissue lysate 4000ug. This data was developed using the same antibody clone with 19958-1-PBS in a different storage buffer formulation.



Immunohistochemical analysis of paraffin-embedded human heart tissue slide using 19958-1-AP (GAC-specific Antibody) at dilution of 1:200 (under 10x lens). This data was developed using the same antibody clone with 19958-1-PBS in a different storage buffer formulation.



Immunofluorescent analysis of (4% PFA) fixed HEK-293 cells using GAC-specific antibody (19958-1-AP) at dilution of 1:200 and Multi-rAb Coralite® Plus 488-Goat Anti-Rabbit Recombinant Secondary Antibody (H+L) (RGAR002), CL594-phalloidin (red). This data was developed using the same antibody clone with 19958-1-PBS in a different storage buffer formulation.