

For Research Use Only

ROBO2 Polyclonal antibody

Catalog Number: 19986-1-AP



Basic Information

Catalog Number:

19986-1-AP

Size:

N/A

Source:

Rabbit

Isotype:

IgG

GenBank Accession Number:

NM_002942

GeneID (NCBI):

6092

UNIPROT ID:

Q9HCK4

Full Name:

roundabout, axon guidance receptor, homolog 2 (Drosophila)

Calculated MW:

151 kDa

Purification Method:

Antigen affinity purification

Recommended Dilutions:

IP 0.5-4.0 ug for 1.0-3.0 mg of total protein lysate
IHC 1:50-1:500

Applications

Tested Applications:

IHC, IP, ELISA

Species Specificity:

human

Note-IHC: suggested antigen retrieval with TE buffer pH 9.0; (*) Alternatively, antigen retrieval may be performed with citrate buffer pH 6.0

Positive Controls:

IP : SH-SY5Y cells,

IHC : human cerebellum tissue, human prostate hyperplasia tissue

Background Information

ROBO2, also named as KIAA1568, belongs to the immunoglobulin superfamily and ROBO family. ROBO2 is a receptor for SLIT2, and probably SLIT1, which are thought to act as molecular guidance cue in cellular migration, including axonal navigation at the ventral midline of the neural tube and projection of axons to different regions during neuronal development. Defects in ROBO2 are the cause of vesicoureteral reflux type 2 (VUR2). A chromosomal aberration involving ROBO2 is a cause of multiple congenital abnormalities, including severe bilateral VUR with ureterovesical junction defects. The antibody recognizes the C-term of ROBO.

Storage

Storage:

Store at -20°C. Stable for one year after shipment.

Storage Buffer:

PBS with 0.02% sodium azide and 50% glycerol pH 7.3.

Aliquoting is unnecessary for -20°C storage

For technical support and original validation data for this product please contact:

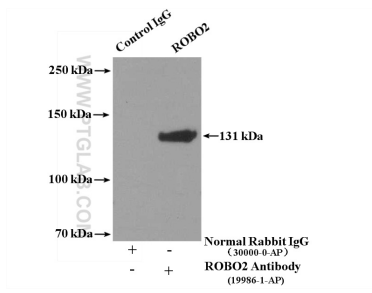
T: 4006900926

E: Proteintech-CN@ptglab.com

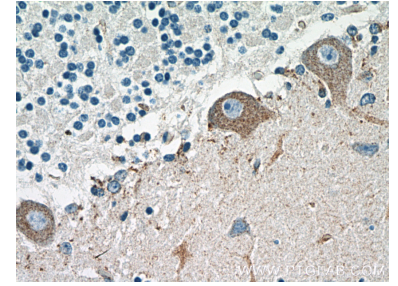
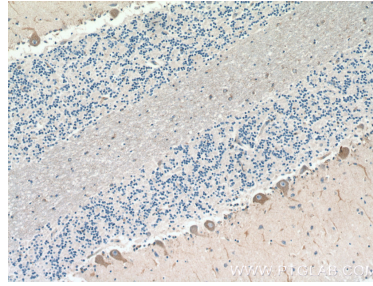
W: ptgcn.com

This product is exclusively available under Proteintech Group brand and is not available to purchase from any other manufacturer.

Selected Validation Data



IP result of anti-ROBO2 (IP:19986-1-AP, 4 μ g; Detection:19986-1-AP 1:300) with SH-SY5Y cells lysate 3600 μ g.



Immunohistochemical analysis of paraffin-embedded human cerebellum tissue slide using 19986-1-AP (ROBO2 Antibody) at dilution of 1:200 (under 40x lens).