

For Research Use Only

CYP4F11-Specific Polyclonal antibody



Catalog Number: 20012-1-AP

2 Publications

Basic Information

Catalog Number:

20012-1-AP

Size:

260 µg/ml

Source:

Rabbit

Isotype:

IgG

GenBank Accession Number:

NM_001128932

GeneID (NCBI):

57834

UNIPROT ID:

Q9HBI6

Full Name:

cytochrome P450, family 4, subfamily F, polypeptide 11

Calculated MW:

60 kDa

Observed MW:

60 kDa

Purification Method:

Antigen affinity purification

Recommended Dilutions:

IHC 1:20-1:200

IF/ICC 1:10-1:100

Applications

Tested Applications:

IF/ICC, IHC, ELISA

Cited Applications:

IHC

Species Specificity:

human, mouse

Cited Species:

human, mouse

Note-IHC: suggested antigen retrieval with TE buffer pH 9.0; (*) Alternatively, antigen retrieval may be performed with citrate buffer pH 6.0

Positive Controls:

IHC : human hepatocirrhosis tissue,

IF/ICC : HepG2 cells,

Background Information

CYP4F11 belongs to the cytochrome P450 family. Cytochromes P450 are a group of heme-thiolate monooxygenases. CYP4F11 catalyze the reaction: RH + reduced flavoprotein + O₂ = ROH + oxidized flavoprotein + H₂O. The antibody is specific to CYP4F11. It has no cross reaction to other CYP4F member. This antibody is specific to CYP4F11.

Notable Publications

Author	Pubmed ID	Journal	Application
Tao Zhang	33310663	Int Immunopharmacol	
Juan Yang	38646426	Biochem Biophys Rep	IHC

Storage

Storage:

Store at -20°C. Stable for one year after shipment.

Storage Buffer:

PBS with 0.02% sodium azide and 50% glycerol pH 7.3.

Aliquoting is unnecessary for -20°C storage

For technical support and original validation data for this product please contact:

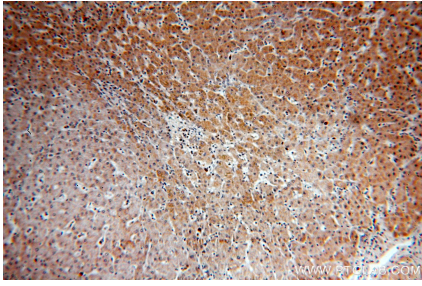
T: 4006900926

E: Proteintech-CN@ptglab.com

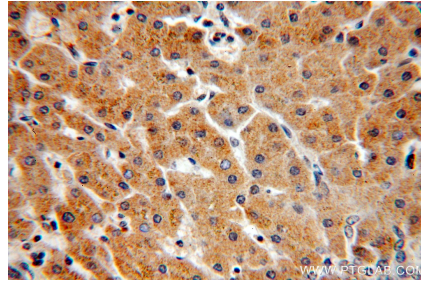
W: ptgcn.com

This product is exclusively available under Proteintech Group brand and is not available to purchase from any other manufacturer.

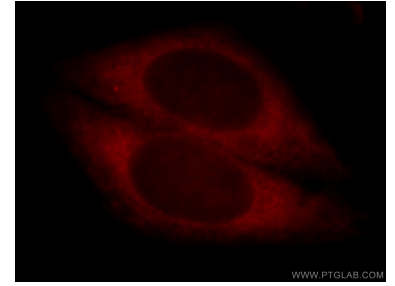
Selected Validation Data



Immunohistochemical analysis of paraffin-embedded human hepatocirrhosis using 20012-1-AP (CYP4F11-Specific antibody) at dilution of 1:50 (under 10x lens).



Immunohistochemical analysis of paraffin-embedded human hepatocirrhosis using 20012-1-AP (CYP4F11-Specific antibody) at dilution of 1:50 (under 40x lens).



Immunofluorescent analysis of HepG2 cells, using CYP4F11 antibody 20012-1-AP at 1:25 dilution and Rhodamine-labeled goat anti-rabbit IgG (red).