

For Research Use Only

# PDZD2 Polyclonal antibody

Catalog Number: 20039-1-AP



## Basic Information

<b>Catalog Number:</b> 20039-1-AP	<b>GenBank Accession Number:</b> NM_178140	<b>Purification Method:</b> Antigen affinity purification
<b>Size:</b> 200 µg/ml	<b>GeneID (NCBI):</b> 23037	<b>Recommended Dilutions:</b> IHC 1:20-1:200 IF/ICC 1:10-1:100
<b>Source:</b> Rabbit	<b>UNIPROT ID:</b> O15018	
<b>Isotype:</b> IgG	<b>Full Name:</b> PDZ domain containing 2	
	<b>Calculated MW:</b> 302 kDa	

## Applications

<b>Tested Applications:</b> IF/ICC, IHC, ELISA	<b>Positive Controls:</b> IHC : human lung tissue, IF/ICC : HeLa cells,
<b>Species Specificity:</b> human, mouse, rat	

**Note-IHC: suggested antigen retrieval with TE buffer pH 9.0; (\*) Alternatively, antigen retrieval may be performed with citrate buffer pH 6.0**

## Background Information

PDZD2, also named as AIPC, KIAA0300 and PDZK3, may be associated with the early promotion of prostate tumorigenesis. The antibody recognizes near the N-term of PDZD2.

## Storage

**Storage:**  
Store at -20°C. Stable for one year after shipment.  
**Storage Buffer:**  
PBS with 0.02% sodium azide and 50% glycerol pH 7.3.  
Aliquoting is unnecessary for -20°C storage

For technical support and original validation data for this product please contact:

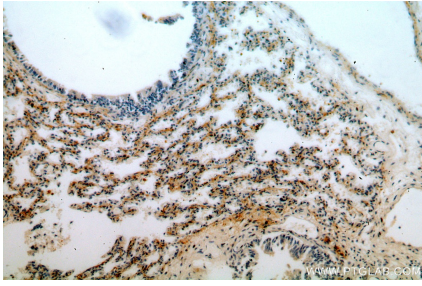
T: 4006900926

E: [Proteintech-CN@ptglab.com](mailto:Proteintech-CN@ptglab.com)

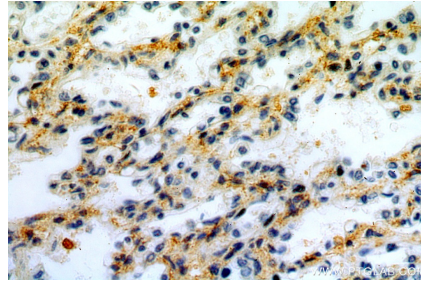
W: [ptgcn.com](http://ptgcn.com)

**This product is exclusively available under Proteintech Group brand and is not available to purchase from any other manufacturer.**

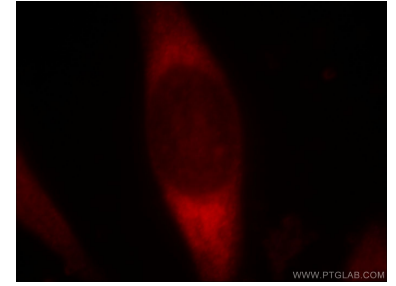
## Selected Validation Data



Immunohistochemical analysis of paraffin-embedded human lung using 20039-1-AP (PDZD2 antibody) at dilution of 1:50 (under 10x lens).



Immunohistochemical analysis of paraffin-embedded human lung using 20039-1-AP (PDZD2 antibody) at dilution of 1:50 (under 40x lens).



Immunofluorescent analysis of HeLa cells, using PDZD2 antibody 20039-1-AP at 1:25 dilution and Rhodamine-labeled goat anti-rabbit IgG (red).