

For Research Use Only

# EPHA6-Specific Polyclonal antibody

Catalog Number: 20211-1-AP



## Basic Information

<b>Catalog Number:</b> 20211-1-AP	<b>GenBank Accession Number:</b> NM_001080448	<b>Purification Method:</b> Antigen affinity purification
<b>Size:</b> 200 µg/ml	<b>GeneID (NCBI):</b> 285220	<b>Recommended Dilutions:</b> IHC 1:20-1:200
<b>Source:</b> Rabbit	<b>UNIPROT ID:</b> Q9UF33	
<b>Isotype:</b> IgG	<b>Full Name:</b> EPH receptor A6	
	<b>Calculated MW:</b> 116 kDa	

## Applications

<b>Tested Applications:</b> IHC, ELISA	<b>Positive Controls:</b> IHC : mouse brain tissue,
<b>Species Specificity:</b> human, mouse, rat	
<b>Note-IHC: suggested antigen retrieval with TE buffer pH 9.0; (*) Alternatively, antigen retrieval may be performed with citrate buffer pH 6.0</b>	

## Background Information

EPHA6, also named as EHK2, belongs to the protein kinase superfamily, Tyr protein kinase family and Ephrin receptor subfamily. It is a receptor for members of the ephrin-A family. EPHA6 catalyzes the reaction: ATP + a [protein]-L-tyrosine = ADP + a [protein]-L-tyrosine phosphate. This antibody is specific to EPHA6.

## Storage

**Storage:**  
Store at -20°C. Stable for one year after shipment.  
**Storage Buffer:**  
PBS with 0.02% sodium azide and 50% glycerol pH 7.3.  
Aliquoting is unnecessary for -20°C storage

For technical support and original validation data for this product please contact:

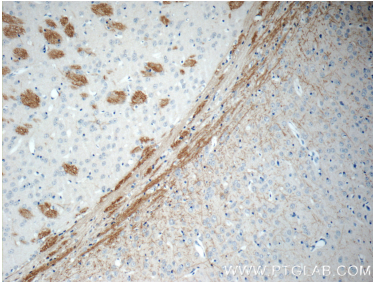
T: 4006900926

E: [Proteintech-CN@ptglab.com](mailto:Proteintech-CN@ptglab.com)

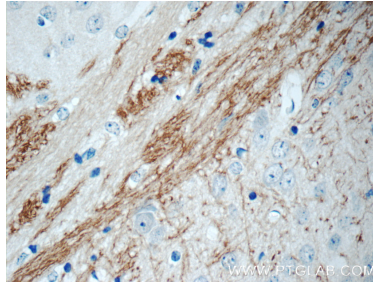
W: [ptgcn.com](http://ptgcn.com)

This product is exclusively available under Proteintech Group brand and is not available to purchase from any other manufacturer.

## Selected Validation Data



Immunohistochemical analysis of paraffin-embedded mouse brain tissue slide using 20211-1-AP (EPHA6-Specific Antibody) at dilution of 1:50 (under 10x lens).



Immunohistochemical analysis of paraffin-embedded mouse brain tissue slide using 20211-1-AP (EPHA6-Specific Antibody) at dilution of 1:50 (under 40x lens).