

For Research Use Only

# SERINC1 Polyclonal antibody

Catalog Number: 20265-1-AP



## Basic Information

**Catalog Number:**

20265-1-AP

**Size:**

387 µg/ml

**Source:**

Rabbit

**Isotype:**

IgG

**GenBank Accession Number:**

NM\_020755

**GeneID (NCBI):**

57515

**UNIPROT ID:**

Q9NRX5

**Full Name:**

serine incorporator 1

**Calculated MW:**

51 kDa

**Observed MW:**

65 kDa

**Purification Method:**

Antigen affinity purification

**Recommended Dilutions:**

WB 1:200-1:1000

IHC 1:20-1:200

IF/ICC 1:50-1:500

## Applications

**Tested Applications:**

IF/ICC, IHC, WB, ELISA

**Species Specificity:**

human

**Note-IHC: suggested antigen retrieval with TE buffer pH 9.0; (\*) Alternatively, antigen retrieval may be performed with citrate buffer pH 6.0**

**Positive Controls:**

WB : HeLa cells, HepG2 cells, L02 cells

IHC : human liver cancer tissue, human cervical cancer tissue

IF/ICC : HepG2 cells,

## Background Information

SERINC1, also named as KIAA1253, TDE1L and TDE2, belongs to the TDE1 family. SERINC1 enhances the incorporation of serine into phosphatidylserine and sphingolipids. The antibody is specific to SERINC1.

## Storage

**Storage:**

Store at -20°C. Stable for one year after shipment.

**Storage Buffer:**

PBS with 0.02% sodium azide and 50% glycerol pH 7.3.

Aliquoting is unnecessary for -20°C storage

For technical support and original validation data for this product please contact:

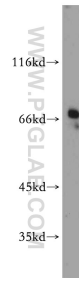
T: 4006900926

E: [Proteintech-CN@ptglab.com](mailto:Proteintech-CN@ptglab.com)

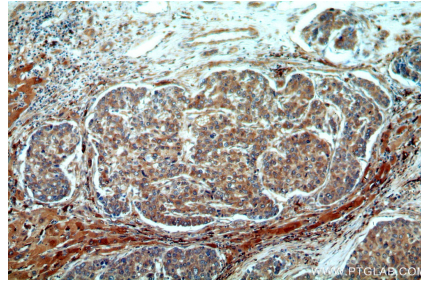
W: [ptgcn.com](http://ptgcn.com)

**This product is exclusively available under Proteintech Group brand and is not available to purchase from any other manufacturer.**

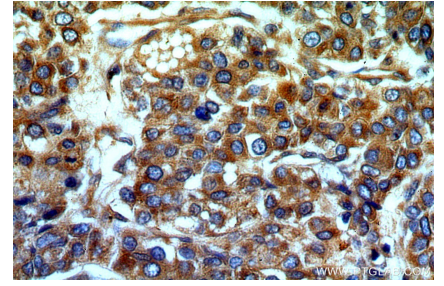
## Selected Validation Data



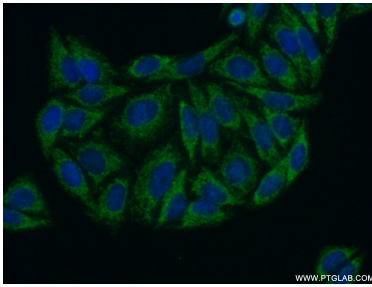
HeLa cells were subjected to SDS PAGE followed by western blot with 20265-1-AP (SERINC1 antibody) at dilution of 1:100 incubated at room temperature for 1.5 hours.



Immunohistochemical analysis of paraffin-embedded human liver cancer using 20265-1-AP (SERINC1 antibody) at dilution of 1:50 (under 10x lens).



Immunohistochemical analysis of paraffin-embedded human liver cancer using 20265-1-AP (SERINC1 antibody) at dilution of 1:50 (under 40x lens).



Immunofluorescent analysis of (-20°C Ethanol) fixed HepG2 cells using 20265-1-AP (SERINC1 antibody) at dilution of 1:50 and Alexa Fluor 488-conjugated AffiniPure Goat Anti-Rabbit IgG(H+L).