

For Research Use Only

SERINC2-Specific Polyclonal antibody



Catalog Number: 20266-1-AP

Featured Product

1 Publications

Basic Information

Catalog Number:

20266-1-AP

Size:

133 µg/ml

Source:

Rabbit

Isotype:

IgG

GenBank Accession Number:

NM_178865

GeneID (NCBI):

347735

UNIPROT ID:

Q96SA4

Full Name:

serine incorporator 2

Calculated MW:

51 kDa

Observed MW:

65 kDa

Purification Method:

Antigen affinity purification

Recommended Dilutions:

WB 1:500-1:1000

Applications

Tested Applications:

WB, ELISA

Cited Applications:

WB

Species Specificity:

human, mouse, rat

Cited Species:

human

Positive Controls:

WB : HepG2 cells, HeLa cells, MCF-7 cells

Background Information

SERINC2, also named as TDE2L, belongs to the TDE1 family. SERINC2 contains 11 transmembrane domains, similar to amino acid transporters. The antibody is specific to SERINC2.

Notable Publications

Author	Pubmed ID	Journal	Application
Tianxing Ying	36612238	Cancers (Basel)	WB

Storage

Storage:

Store at -20°C. Stable for one year after shipment.

Storage Buffer:

PBS with 0.02% sodium azide and 50% glycerol pH 7.3.

Aliquoting is unnecessary for -20°C storage

For technical support and original validation data for this product please contact:

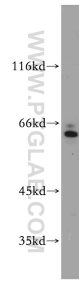
T: 4006900926

E: Proteintech-CN@ptglab.com

W: ptgcn.com

This product is exclusively available under Proteintech Group brand and is not available to purchase from any other manufacturer.

Selected Validation Data



HepG2 cells were subjected to SDS PAGE followed by western blot with 20266-1-AP (SERINC2-Specific antibody) at dilution of 1:100 incubated at room temperature for 1.5 hours.