

For Research Use Only

# ELOVL2 Polyclonal antibody

Catalog Number: 20308-1-AP

2 Publications



## Basic Information

**Catalog Number:**

20308-1-AP

**Size:**

300 µg/ml

**Source:**

Rabbit

**Isotype:**

IgG

**Immunogen Catalog Number:**

AG14143

**GenBank Accession Number:**

BC050278

**GeneID (NCBI):**

54898

**UNIPROT ID:**

Q9NXB9

**Full Name:**

elongation of very long chain fatty acids (FEN1/Elo2, SUR4/Elo3, yeast)-like 2

**Calculated MW:**

296 aa, 35 kDa

**Purification Method:**

Antigen affinity purification

**Recommended Dilutions:**

IHC 1:20-1:200

## Applications

**Tested Applications:**

IHC, ELISA

**Cited Applications:**

IHC

**Species Specificity:**

human, mouse, rat

**Cited Species:**

human, mouse

**Note-IHC: suggested antigen retrieval with TE buffer pH 9.0; (\*) Alternatively, antigen retrieval may be performed with citrate buffer pH 6.0**

**Positive Controls:**

IHC : human testis tissue, human hepatocirrhosis tissue

## Background Information

### Notable Publications

| Author           | Pubmed ID | Journal       | Application |
|------------------|-----------|---------------|-------------|
| Sahar F Bannoura | 39321913  | Cancer Lett   | IHC         |
| Zhenyu Wang      | 37483592  | Front Immunol | IHC         |

## Storage

**Storage:**

Store at -20°C. Stable for one year after shipment.

**Storage Buffer:**

PBS with 0.02% sodium azide and 50% glycerol pH 7.3.

Aliquoting is unnecessary for -20°C storage

For technical support and original validation data for this product please contact:

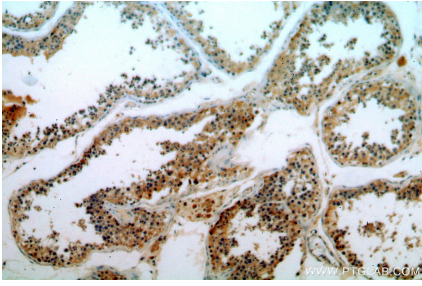
T: 4006900926

E: Proteintech-CN@ptglab.com

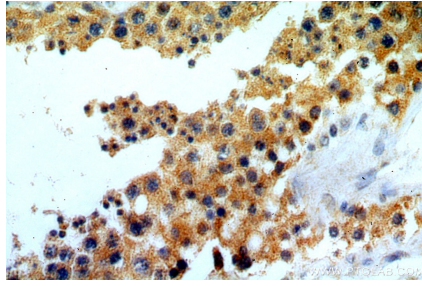
W: ptgcn.com

**This product is exclusively available under Proteintech Group brand and is not available to purchase from any other manufacturer.**

## Selected Validation Data



Immunohistochemical analysis of paraffin-embedded human testis using 20308-1-AP (ELOVL2 antibody) at dilution of 1:50 (under 10x lens).



Immunohistochemical analysis of paraffin-embedded human testis using 20308-1-AP (ELOVL2 antibody) at dilution of 1:50 (under 40x lens).