

For Research Use Only

# RNF181 Polyclonal antibody, PBS Only

Catalog Number: 20408-1-PBS



## Basic Information

<b>Catalog Number:</b> 20408-1-PBS	<b>GenBank Accession Number:</b> BC002803	<b>Purification Method:</b> Antigen affinity purification
<b>Size:</b> 1 mg/ml	<b>GeneID (NCBI):</b> 51255	
<b>Source:</b> Rabbit	<b>UNIPROT ID:</b> Q9POPO	
<b>Isotype:</b> IgG	<b>Full Name:</b> ring finger protein 181	
<b>Immunogen Catalog Number:</b> AG14233	<b>Calculated MW:</b> 153 aa, 18 kDa	
	<b>Observed MW:</b> 18 kDa	

## Applications

**Tested Applications:**  
WB, IHC, IF/ICC, IP, Indirect ELISA

**Species Specificity:**  
human, mouse

## Background Information

RNF181, also named as HSPC238, is a 153 amino acid protein, which belongs to the RNF181 family. RNF181 is widely expressed, with highest levels in liver and heart and lowest levels in brain and skeletal muscle. RNF181 as a E3 ubiquitin-protein ligase, accepts ubiquitin from an E2 ubiquitin-conjugating enzyme in the form of a thioester and then directly transfers the ubiquitin to targeted substrates. Western blot analysis detected RNF181 protein in human platelets as a 36-kD dimer and an 18-kD monomer.

## Storage

**Storage:**  
Store at -80°C.  
**The product is shipped with ice packs. Upon receipt, store it immediately at -80°C**

**Storage Buffer:**  
PBS Only

For technical support and original validation data for this product please contact:

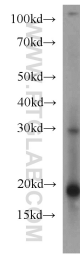
T: 4006900926

E: [Proteintech-CN@ptglab.com](mailto:Proteintech-CN@ptglab.com)

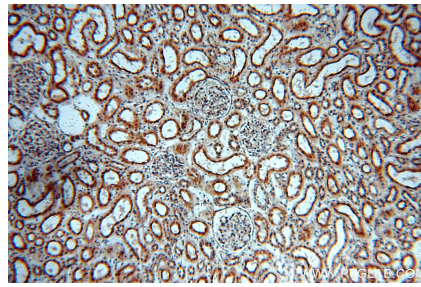
W: [ptgcn.com](http://ptgcn.com)

**This product is exclusively available under Proteintech Group brand and is not available to purchase from any other manufacturer.**

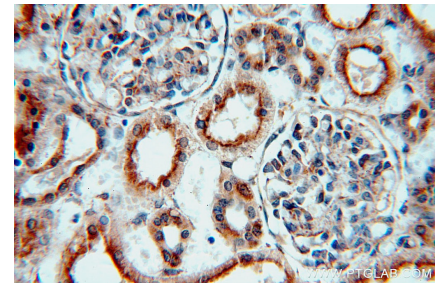
## Selected Validation Data



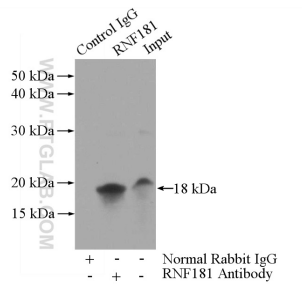
Jurkat cells were subjected to SDS PAGE followed by western blot with 20408-1-AP (RNF181 antibody) at dilution of 1:500 incubated at room temperature for 1.5 hours. This data was developed using the same antibody clone with 20408-1-PBS in a different storage buffer formulation.



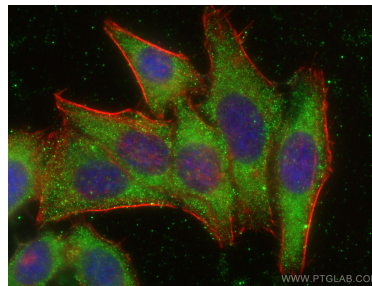
Immunohistochemical analysis of paraffin-embedded human kidney using 20408-1-AP (RNF181 antibody) at dilution of 1:100 (under 10x lens). This data was developed using the same antibody clone with 20408-1-PBS in a different storage buffer formulation.



Immunohistochemical analysis of paraffin-embedded human kidney using 20408-1-AP (RNF181 antibody) at dilution of 1:100 (under 40x lens). This data was developed using the same antibody clone with 20408-1-PBS in a different storage buffer formulation.



IP result of anti-RNF181 (IP:20408-1-AP, 3ug; Detection:20408-1-AP 1:500) with Jurkat cells lysate 1200ug. This data was developed using the same antibody clone with 20408-1-PBS in a different storage buffer formulation.



Immunofluorescent analysis of (-20°C Ethanol) fixed HepG2 cells using RNF181 antibody (20408-1-AP) at dilution of 1:200 and Coralite@488-Conjugated AffiniPure Goat Anti-Rabbit IgG(H+L), CL594-Phalloidin (red). This data was developed using the same antibody clone with 20408-1-PBS in a different storage buffer formulation.