

For Research Use Only

Fibulin-1 Polyclonal antibody

Catalog Number: 20425-1-AP **2 Publications**



Basic Information

Catalog Number: 20425-1-AP	GenBank Accession Number: BC022497	Purification Method: Antigen affinity purification
Size: 260 ug/ml	GeneID (NCBI): 2192	Recommended Dilutions: WB 1:500-1:2000
Source: Rabbit	UNIPROT ID: P23142	IP 0.5-4.0 ug for 1.0-3.0 mg of total protein lysate
Isotype: IgG	Full Name: fibulin 1	IHC 1:50-1:500
Immunogen Catalog Number: AG14249	Calculated MW: 703 aa, 77 kDa	IF/ICC 1:50-1:500
	Observed MW: 100 kDa	

Applications

Tested Applications: WB, IHC, IF/ICC, IP, ELISA	Positive Controls: WB : human placenta tissue, IP : human placenta tissue, IHC : human stomach tissue, IF/ICC : HeLa cells,
Cited Applications: WB, IHC, IF	
Species Specificity: human, mouse, rat	
Cited Species: human	
Note-IHC: suggested antigen retrieval with TE buffer pH 9.0; (*) Alternatively, antigen retrieval may be performed with citrate buffer pH 6.0	

Background Information

Notable Publications

Author	Pubmed ID	Journal	Application
Yueyan Li	32969194	Proteomics Clin Appl	WB
Guokun Zhang	37875042	Comput Biol Med	WB,IHC,IF

Storage

Storage:
Store at -20°C. Stable for one year after shipment.
Storage Buffer:
PBS with 0.02% sodium azide and 50% glycerol pH 7.3.
Aliquoting is unnecessary for -20°C storage

For technical support and original validation data for this product please contact:

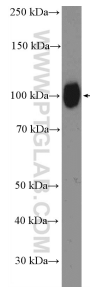
T: 4006900926

E: Proteintech-CN@ptglab.com

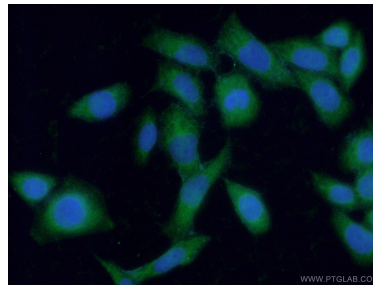
W: ptgcn.com

This product is exclusively available under Proteintech Group brand and is not available to purchase from any other manufacturer.

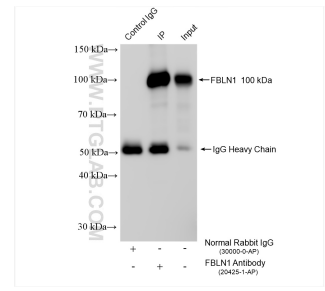
Selected Validation Data



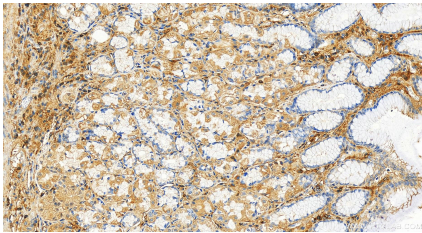
human placenta tissue were subjected to SDS PAGE followed by western blot with 20425-1-AP (Fibulin-1 antibody at dilution of 1:1000 incubated at room temperature for 1.5 hours.



Immunofluorescent analysis of (-20°C Ethanol) fixed HeLa cells using 20425-1-AP (Fibulin-1 antibody) at dilution of 1:50 and Alexa Fluor 488-conjugated AffiniPure Goat Anti-Rabbit IgG(H+L).



IP result of anti-Fibulin-1 (IP:20425-1-AP, 4ug; Detection:20425-1-AP 1:20000) with human placenta tissue lysate 800 ug.



Immunohistochemical analysis of paraffin-embedded human stomach tissue slide using 20425-1-AP (Fibulin-1 antibody) at dilution of 1:200 (under 20x lens). Heat mediated antigen retrieval with Tris-EDTA buffer (pH 9.0).