

For Research Use Only

# CLK1 Polyclonal antibody

Catalog Number: 20439-1-AP



## Basic Information

Catalog Number:

20439-1-AP

Size:

300 µg/ml

Source:

Rabbit

Isotype:

IgG

Immunogen Catalog Number:

AG14214

GenBank Accession Number:

BC031549

GeneID (NCBI):

1195

UNIPROT ID:

P49759

Full Name:

CDC-like kinase 1

Calculated MW:

484 aa, 57 kDa

Observed MW:

62 kDa

Purification Method:

Antigen affinity purification

Recommended Dilutions:

WB 1:200-1:1000

IP 0.5-4.0 µg for 1.0-3.0 mg of total protein lysate

## Applications

Tested Applications:

IP, WB, ELISA

Species Specificity:

human, mouse, rat

Positive Controls:

WB : COLO 320 cells, HeLa cells, HepG2 cells

IP : COLO 320 cells,

## Background Information

### Storage

Storage:

Store at -20°C. Stable for one year after shipment.

Storage Buffer:

PBS with 0.02% sodium azide and 50% glycerol pH 7.3.

Aliquoting is unnecessary for -20°C storage

For technical support and original validation data for this product please contact:

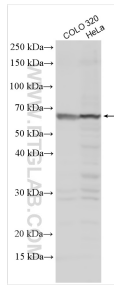
T: 4006900926

E: [Proteintech-CN@ptglab.com](mailto:Proteintech-CN@ptglab.com)

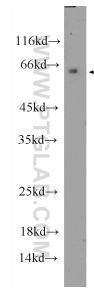
W: [ptgcn.com](http://ptgcn.com)

This product is exclusively available under Proteintech Group brand and is not available to purchase from any other manufacturer.

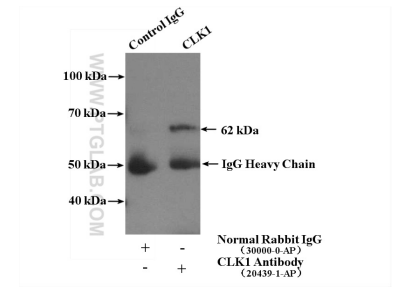
## Selected Validation Data



Various lysates were subjected to SDS PAGE followed by western blot with 20439-1-AP (CLK1 antibody) at dilution of 1:400 incubated at room temperature for 1.5 hours.



HepG2 cells were subjected to SDS PAGE followed by western blot with 20439-1-AP (CLK1 Antibody) at dilution of 1:300 incubated at 4 degree celsius over night.



IP result of anti-CLK1 (IP:20439-1-AP, 4ug; Detection:20439-1-AP 1:300) with COLO 320 cells lysate 2000ug.