

For Research Use Only

# C5orf44 Polyclonal antibody

Catalog Number: 20444-1-AP



## Basic Information

<b>Catalog Number:</b> 20444-1-AP	<b>GenBank Accession Number:</b> BC012006	<b>Purification Method:</b> Antigen affinity purification
<b>Size:</b> 650 µg/ml	<b>GeneID (NCBI):</b> 80006	<b>Recommended Dilutions:</b> WB 1:500-1:1000 IHC 1:20-1:200 IF 1:20-1:200
<b>Source:</b> Rabbit	<b>UNIPROT ID:</b> A5PLN9	
<b>Isotype:</b> IgG	<b>Full Name:</b> chromosome 5 open reading frame 44	
<b>Immunogen Catalog Number:</b> AG14267	<b>Calculated MW:</b> 417 aa, 47 kDa	
	<b>Observed MW:</b> 47 kDa	

## Applications

<b>Tested Applications:</b> IF/ICC, IHC, WB, ELISA	<b>Positive Controls:</b> WB : HEK-293 cells, HeLa cells
<b>Species Specificity:</b> human, mouse, rat	<b>IHC :</b> human kidney tissue, human testis tissue
<b>Note-IHC: suggested antigen retrieval with TE buffer pH 9.0; (*) Alternatively, antigen retrieval may be performed with citrate buffer pH 6.0</b>	<b>IF :</b> HEK-293 cells,

## Background Information

The function of C5orf44 has not been widely studied, and is yet to be fully elucidated. The MW of this protein is 47 kDa, and this antibody specially recognises the 47 kDa protein.

## Storage

**Storage:**  
Store at -20°C. Stable for one year after shipment.  
**Storage Buffer:**  
PBS with 0.02% sodium azide and 50% glycerol pH 7.3.  
Aliquoting is unnecessary for -20°C storage

For technical support and original validation data for this product please contact:

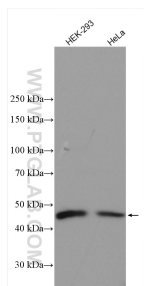
T: 4006900926

E: Proteintech-CN@ptglab.com

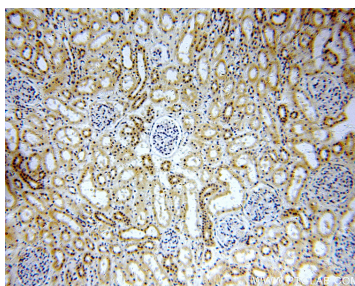
W: ptgcn.com

**This product is exclusively available under Proteintech Group brand and is not available to purchase from any other manufacturer.**

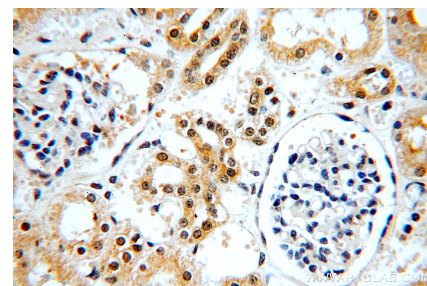
## Selected Validation Data



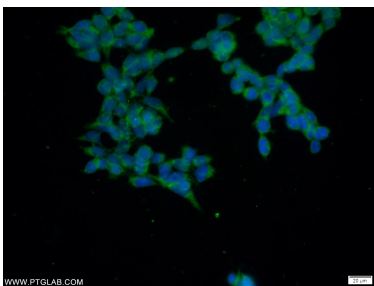
Various lysates were subjected to SDS PAGE followed by western blot with 20444-1-AP (C5orf44 antibody) at dilution of 1:800 incubated at room temperature for 1.5 hours.



Immunohistochemical analysis of paraffin-embedded human kidney using 20444-1-AP (C5orf44 antibody) at dilution of 1:50 (under 10x lens).



Immunohistochemical analysis of paraffin-embedded human kidney using 20444-1-AP (C5orf44 antibody) at dilution of 1:50 (under 40x lens).



Immunofluorescent analysis of HEK-293 cells using 20444-1-AP (C5orf44 antibody) at dilution of 1:50 and Alexa Fluor 488-conjugated AffiniPure Goat Anti-Rabbit IgG(H+L).