

For Research Use Only

WDR32 Polyclonal antibody

Catalog Number: 20483-1-AP



Basic Information

Catalog Number:

20483-1-AP

Size:

300 µg/ml

Source:

Rabbit

Isotype:

IgG

Immunogen Catalog Number:

AG14360

GenBank Accession Number:

BC003520

GeneID (NCBI):

79269

UNIPROT ID:

Q5QP82

Full Name:

WD repeat domain 32

Calculated MW:

559 aa, 61 kDa

Observed MW:

61 kDa

Purification Method:

Antigen affinity purification

Recommended Dilutions:

WB 1:500-1:1000

IP 0.5-4.0 µg for 1.0-3.0 mg of total protein lysate

IHC 1:20-1:200

IF/ICC 1:20-1:200

Applications

Tested Applications:

IF/ICC, IHC, IP, WB, ELISA

Species Specificity:

human, mouse, rat

Note-IHC: suggested antigen retrieval with TE buffer pH 9.0; (*) Alternatively, antigen retrieval may be performed with citrate buffer pH 6.0

Positive Controls:

WB : HeLa cells, HepG2 cells

IP : HepG2 cells,

IHC : human testis tissue, human kidney tissue

IF/ICC : HepG2 cells,

Background Information

WDR32, containing seven WD repeats, is also termed DDB1- and CUL4-associated factor 10 (DCAF10), which may function as a substrate receptor for CUL4-DDB1 E3 ubiquitin-protein ligase complex (PMID: 16949367). WDR32 is able to interact with DDB1 (PMID: 16949367). WDR32 is supposed to be implicated in process of ubiquitin-dependent protein degradation system. Two isoforms are described and produced by alternative splicing. Proteintech's WDR32 antibody 20483-1-AP majorly detects WDR32 isoform1 with a theoretical MW of 61 kDa.

Storage

Storage:

Store at -20°C. Stable for one year after shipment.

Storage Buffer:

PBS with 0.02% sodium azide and 50% glycerol pH 7.3.

Aliquoting is unnecessary for -20°C storage

For technical support and original validation data for this product please contact:

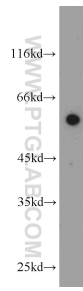
T: 4006900926

E: Proteintech-CN@ptglab.com

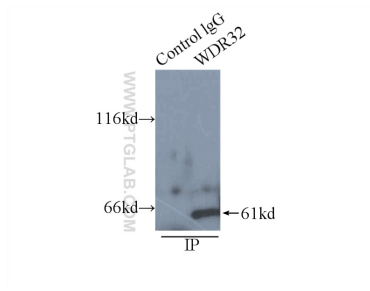
W: ptgcn.com

This product is exclusively available under Proteintech Group brand and is not available to purchase from any other manufacturer.

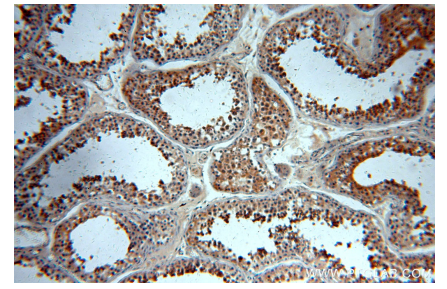
Selected Validation Data



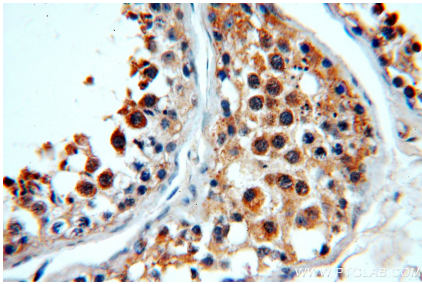
HeLa cells were subjected to SDS PAGE followed by western blot with 20483-1-AP (WDR32 antibody) at dilution of 1:800 incubated at room temperature for 1.5 hours.



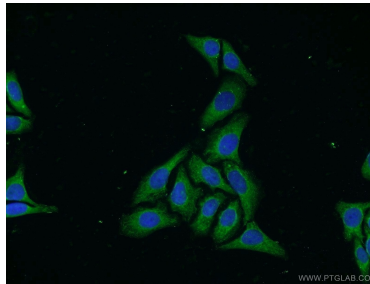
IP result of anti-WDR32 (IP:20483-1-AP, 4ug; Detection:20483-1-AP 1:300) with HepG2 cells lysate 6000ug.



Immunohistochemical analysis of paraffin-embedded human testis using 20483-1-AP (WDR32 antibody) at dilution of 1:100 (under 10x lens).



Immunohistochemical analysis of paraffin-embedded human testis using 20483-1-AP (WDR32 antibody) at dilution of 1:100 (under 40x lens).



Immunofluorescent analysis of HepG2 cells using 20483-1-AP (WDR32 antibody) at dilution of 1:50 and Alexa Fluor 488-conjugated AffiniPure Goat Anti-Rabbit IgG(H+L).