

For Research Use Only

# SH3BP1 Polyclonal antibody

Catalog Number: 20541-1-AP

Featured Product

3 Publications



## Basic Information

**Catalog Number:**

20541-1-AP

**Size:**

600 ug/ml

**Source:**

Rabbit

**Isotype:**

IgG

**Immunogen Catalog Number:**

AG14575

**GenBank Accession Number:**

BC008282

**GeneID (NCBI):**

23616

**UNIPROT ID:**

Q9Y3L3

**Full Name:**

SH3-domain binding protein 1

**Calculated MW:**

701 aa, 76 kDa

**Observed MW:**

76-80 kDa, 51 kDa

**Purification Method:**

Antigen affinity purification

**Recommended Dilutions:**

WB 1:2000-1:10000

IHC 1:500-1:2000

IF/ICC 1:200-1:800

## Applications

**Tested Applications:**

WB, IHC, IF/ICC, ELISA

**Cited Applications:**

WB, IF

**Species Specificity:**

human, mouse

**Cited Species:**

human, mouse

**Note-IHC: suggested antigen retrieval with TE buffer pH 9.0; (\*) Alternatively, antigen retrieval may be performed with citrate buffer pH 6.0**

**Positive Controls:**

**WB:** HeLa cells, mouse brain tissue, HepG2 cells, mouse lung tissue, mouse spleen tissue

**IHC:** human stomach cancer tissue,

**IF/ICC:** HeLa cells,

## Background Information

### Notable Publications

Author	Pubmed ID	Journal	Application
Daniel Schlam	26465210	Nat Commun	IF
Kibeom Park	35352878	Cancer Med	WB
Li Yang	38582737	J Formos Med Assoc	WB

## Storage

**Storage:**

Store at -20°C. Stable for one year after shipment.

**Storage Buffer:**

PBS with 0.02% sodium azide and 50% glycerol pH 7.3.

Aliquoting is unnecessary for -20°C storage

For technical support and original validation data for this product please contact:

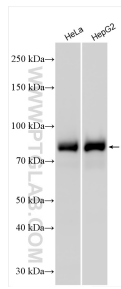
T: 4006900926

E: Proteintech-CN@ptglab.com

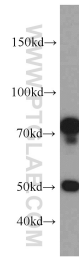
W: ptgcn.com

**This product is exclusively available under Proteintech Group brand and is not available to purchase from any other manufacturer.**

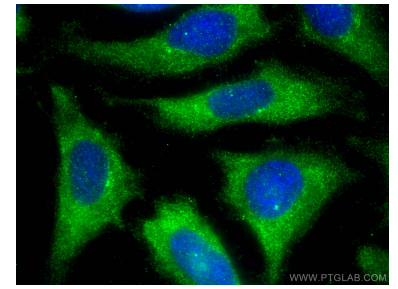
## Selected Validation Data



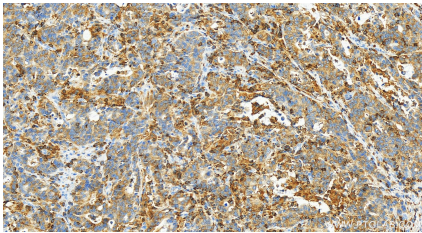
Various lysates were subjected to SDS PAGE followed by western blot with 20541-1-AP (SH3BP1 antibody) at dilution of 1:5000 incubated at room temperature for 1.5 hours.



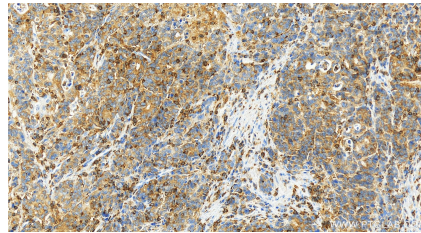
mouse lung tissue were subjected to SDS PAGE followed by western blot with 20541-1-AP (SH3BP1 antibody) at dilution of 1:500 incubated at room temperature for 1.5 hours.



Immunofluorescent analysis of (-20°C Ethanol) fixed HeLa cells using SH3BP1 antibody (20541-1-AP) at dilution of 1:400 and CoraLite®488-Conjugated AffiniPure Goat Anti-Rabbit IgG(H+L).



Immunohistochemical analysis of paraffin-embedded human stomach cancer tissue slide using 20541-1-AP (SH3BP1 antibody) at dilution of 1:1000 (under 20x lens). Heat mediated antigen retrieval with Tris-EDTA buffer (pH 9.0).



Immunohistochemical analysis of paraffin-embedded human stomach cancer tissue slide using 20541-1-AP (SH3BP1 antibody) at dilution of 1:1000 (under 20x lens). Heat mediated antigen retrieval with Tris-EDTA buffer (pH 9.0).