

For Research Use Only

# ORAI2 Polyclonal antibody

Catalog Number: 20592-1-AP **6 Publications**



## Basic Information

**Catalog Number:**

20592-1-AP

**Size:**

300 µg/ml

**Source:**

Rabbit

**Isotype:**

IgG

**Immunogen Catalog Number:**

AG14540

**GenBank Accession Number:**

BC069270

**GeneID (NCBI):**

80228

**UNIPROT ID:**

Q96SN7

**Full Name:**

ORAI calcium release-activated calcium modulator 2

**Calculated MW:**

254 aa, 29 kDa

**Observed MW:**

36 kDa

**Purification Method:**

Antigen Affinity purified

**Recommended Dilutions:**

WB 1:500-1:1000

IHC 1:20-1:200

IF 1:10-1:100

## Applications

**Tested Applications:**

FC, IF, IHC, WB, ELISA

**Cited Applications:**

WB, IP

**Species Specificity:**

human, mouse

**Cited Species:**

human, mouse, rat

**Note-IHC: suggested antigen retrieval with TE buffer pH 9.0; (\*) Alternatively, antigen retrieval may be performed with citrate buffer pH 6.0**

**Positive Controls:**

WB : MCF-7 cells, mouse heart tissue

IHC : human kidney tissue,

IF : HEK-293 cells,

## Background Information

ORAI2, also named as C7orf19, CBCIP2, TMEM142B and PP1729, is a Ca<sup>2+</sup> release-activated Ca<sup>2+</sup>-like (CRAC-like) channel subunit. The MW of ORAI2 is about 36 kDa for glycosylation (PMID: 19675303).

## Notable Publications

Author	Pubmed ID	Journal	Application
Fangfang Xu	34595206	Front Mol Biosci	WB
Jesse Gammons	33849280	J Am Heart Assoc	WB
Wu Lele	33850559	Exp Ther Med	WB

## Storage

**Storage:**

Store at -20°C. Stable for one year after shipment.

**Storage Buffer:**

PBS with 0.02% sodium azide and 50% glycerol pH 7.3.

Aliquoting is unnecessary for -20°C storage

For technical support and original validation data for this product please contact:

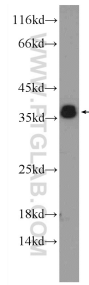
T: 4006900926

E: Proteintech-CN@ptglab.com

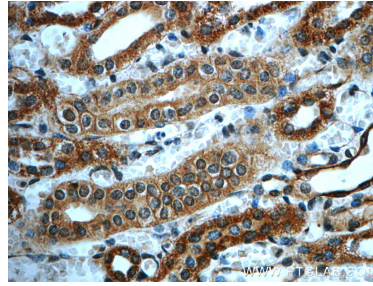
W: ptgcn.com

**This product is exclusively available under Proteintech Group brand and is not available to purchase from any other manufacturer.**

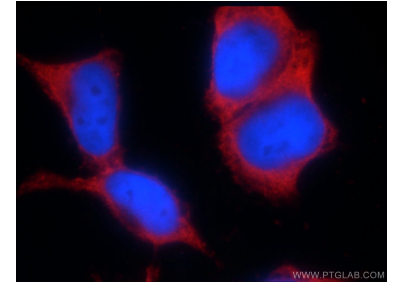
## Selected Validation Data



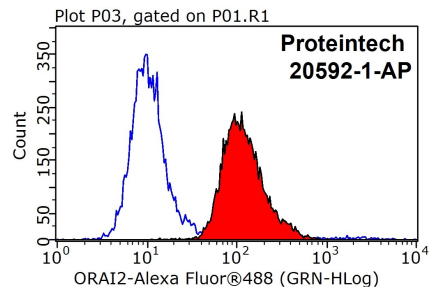
MCF-7 cells were subjected to SDS PAGE followed by western blot with 20592-1-AP (ORAI2 Antibody) at dilution of 1:600 incubated at room temperature for 1.5 hours.



Immunohistochemical analysis of paraffin-embedded human kidney slide using 20592-1-AP (ORAI2 Antibody) at dilution of 1:50.



Immunofluorescent analysis of HEK-293 cells using 20592-1-AP (ORAI2 antibody) at dilution of 1:25 and Rhodamine-Goat anti-Rabbit IgG.



1X10<sup>6</sup> HEK-293 cells were stained with 0.2ug ORAI2 antibody (20592-1-AP, red) and control antibody (blue). Fixed with 90% MeOH blocked with 3% BSA (30 min). Alexa Fluor 488-conjugated AffiniPure Goat Anti-Rabbit IgG(H+L) with dilution 1:1000.