

For Research Use Only

SLC25A40 Polyclonal antibody

Catalog Number:20615-1-AP



Basic Information

Catalog Number: 20615-1-AP	GenBank Accession Number: BC027322	Purification Method: Antigen affinity purification
Size: 400 ug/ml	GeneID (NCBI): 55972	Recommended Dilutions: WB 1:2000-1:12000 IHC 1:50-1:500
Source: Rabbit	UNIPROT ID: Q8TBP6	
Isotype: IgG	Full Name: solute carrier family 25, member 40	
Immunogen Catalog Number: AG14669	Calculated MW: 338 aa, 38 kDa	
	Observed MW: 30-38 kDa	

Applications

Tested Applications:

WB, IHC, ELISA

Species Specificity:

human, mouse

Note-IHC: suggested antigen retrieval with TE buffer pH 9.0; (*) Alternatively, antigen retrieval may be performed with citrate buffer pH 6.0

Positive Controls:

WB : C2C12 cells, mouse kidney tissue, mouse liver tissue

IHC : human placenta tissue, mouse kidney tissue

Background Information

SLC25A40 (solute carrier family 25, member 40) is one of the solute carrier (SLC) transporters that comprise a family of MCS transporters and uptakes GSH into mitochondria (PMID: 37407483). The SLC25A40 mRNA levels were significantly increased in both the kidneys of LPS mice and KMRC-1 cells after LPS treatment, when compared with those in the controls (PMID: 35955707).

Storage

Storage:

Store at -20°C. Stable for one year after shipment.

Storage Buffer:

PBS with 0.02% sodium azide and 50% glycerol pH 7.3.

Aliquoting is unnecessary for -20°C storage

For technical support and original validation data for this product please contact:

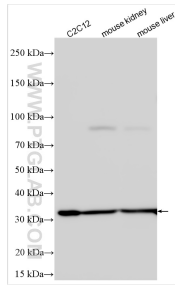
T: 4006900926

E: Proteintech-CN@ptglab.com

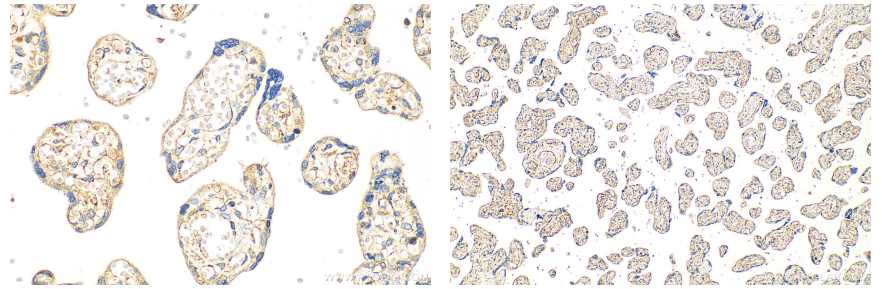
W: ptgcn.com

This product is exclusively available under Proteintech Group brand and is not available to purchase from any other manufacturer.

Selected Validation Data



Various lysates were subjected to SDS PAGE followed by western blot with 20615-1-AP (SLC25A40 antibody) at dilution of 1:6000 incubated at room temperature for 1.5 hours.



Immunohistochemical analysis of paraffin-embedded human placenta tissue slide using 20615-1-AP (SLC25A40 antibody) at dilution of 1:200 (under 40x lens). Heat mediated antigen retrieval with Tris-EDTA buffer (pH 9.0).

Immunohistochemical analysis of paraffin-embedded human placenta tissue slide using 20615-1-AP (SLC25A40 antibody) at dilution of 1:200 (under 10x lens). Heat mediated antigen retrieval with Tris-EDTA buffer (pH 9.0).